



## CONTENTS

<b>1</b>	<b>About Unity Reception .....</b>	<b>7</b>
1.1	Unity Reception Enterprise .....	8
1.2	System Requirements.....	8
1.2.1	Windows PC Requirements .....	8
1.2.2	Internet & Firewall.....	8
1.2.3	VoIP Platform Requirements .....	9
1.2.4	VoIP Platform Licence & Service Requirements .....	9
1.2.5	Remote Service Configuration Requirements .....	10
1.2.6	Call Centre Agent Requirements .....	10
1.3	Initial Setup.....	11
1.4	Manual and Auto Updates .....	11
1.5	Rollback available .....	12
<b>2</b>	<b>Unity Reception Interface Overview .....</b>	<b>13</b>
2.1	Resizing Unity Reception .....	13
2.2	Maximising and Minimising.....	13
2.3	Using Unity Reception from the System Tray .....	14
2.4	Call Notification Preferences .....	15
2.4.1	Show Remote Party Phone Number.....	15
2.4.2	Override Contact Name Using Number.....	15
2.5	Summary Toast Notification.....	16
2.6	Browser Screen-Pop .....	16
2.7	Appearance.....	16
2.7.1	Always Show Unity On Top Of Windows .....	16
2.7.2	Show Missed Call Count In Call Log Tab .....	16
2.8	Skins.....	17
<b>3</b>	<b>Main Interface Elements.....</b>	<b>17</b>
3.1	Call Control .....	17

3.2	Active Call Window.....	17
3.3	Contacts List [Busy Lamp Field] .....	17
3.4	Call Logs .....	18
3.5	Visual Voicemail.....	18
<b>4</b>	<b>Call Control .....</b>	<b>19</b>
4.1	Making a Call .....	20
4.1.1	Using the Dial Window .....	20
4.1.2	Using the Contacts Panel.....	20
4.1.3	Drag and Drop .....	20
4.1.4	Dial from the Clipboard .....	20
4.2	Answer a Call .....	21
4.3	End a Call .....	21
4.4	Redial .....	21
4.5	Send Call to Voicemail .....	22
4.5.1	Retrieving Voicemail Messages .....	22
4.6	Transferring a Call.....	22
4.6.1	Announced Transfer using Transfer Button .....	22
4.6.2	Announced Transfer using Drag & Drop.....	23
4.6.3	Announced Transfer using Warm Transfer Button .....	23
4.6.4	Blind Transfer using Drag & Drop .....	23
4.6.5	Blind Transfer using Transfer Button.....	24
4.6.6	Blind Transfer using Right Click .....	24
4.6.7	Transfer to Voicemail using Right Click .....	25
4.6.8	Transfer to Voicemail using Drag & Drop .....	25
4.6.9	Transfer to Mobile .....	25
4.7	Call Hold/Retrieve.....	25
4.7.1	Placing a Call on Hold .....	26
4.7.2	Retrieving a Held Call.....	26
4.8	Conference Calling.....	26
4.8.1	Starting a Conference Call .....	26
4.8.2	Adding Multiple Parties .....	27
4.8.3	Dropping a Participant.....	27
4.8.4	Ending a Conference.....	28

4.8.5	Conference Bridge Integration .....	28
4.9	Call Recording .....	28
4.9.1	Changing the Call Recording Option.....	28
4.9.2	Controlling Call Recording .....	29
4.10	Using Paging Groups.....	30
4.11	Retrieving a Parked Call .....	30
<b>5</b>	<b>Active Call Window.....</b>	<b>31</b>
5.1	Window Layout.....	31
5.1.1	From .....	31
5.1.2	To .....	31
5.1.3	Duration.....	31
5.1.4	Status .....	31
5.1.5	Notes .....	32
5.2	Resizing the Current Call List .....	32
5.3	Managing Multiple Calls .....	32
5.4	Configuring Which Calls are Displayed in Active Call Window .....	33
5.5	Transfer History .....	33
5.6	Configuration.....	33
5.6.1	Resize the Current Call List .....	34
5.6.2	Grouping Calls.....	34
5.6.3	Double Click to Retrieve .....	34
5.6.4	Display Parked & Camped Calls .....	34
5.6.5	Display Notes.....	35
5.6.6	When Linked User Becomes Available .....	35
5.6.7	Transfer History .....	35
<b>6</b>	<b>Drag and Drop.....</b>	<b>35</b>
6.1	Make a Call to a User or Number .....	35
6.2	Transferring a Call to a User .....	35
6.3	Make a Call to a Call Center.....	36
6.4	Transferring a Call to a Call Center .....	36
6.5	Send to Voicemail.....	36
6.6	Call Control .....	36
6.7	Manage Instant Messages.....	36

<b>7</b>	<b>Contacts Panel [Busy Lamp Field]</b>	<b>38</b>
7.1	Contact Panel Display Options	38
7.1.1	Details View	38
7.1.2	List View	39
7.1.3	Small Icon View	39
7.1.4	Tile View	39
7.2	User Icons	40
7.2.1	Displaying the Tool Tip	40
7.3	Selecting the Contacts Panel Default List	40
7.4	Contact Groups	41
7.4.1	Creating a Contact Group	42
7.4.2	Adding Users to an Existing Contact Group	42
7.4.3	Removing Users from Contact Groups	43
7.4.4	Deleting Contact Groups	43
7.4.5	Renaming Contact Groups	43
7.5	Performing Call Control Actions in the Contacts Panel	44
7.5.1	Call Extension	44
7.5.2	Answer This Call [Call Pick-Up]	44
7.5.3	Park Call on Extension	45
7.5.4	Camp Call on Extension	45
7.5.5	Hold Call and Link to User	45
7.5.6	Call Mobile	47
7.5.7	Transfer Call to Mobile	47
7.5.8	Transfer Call to VoiceMail	47
7.5.9	Barge into This Call	47
7.5.10	Call Extension When Available	48
7.5.11	View User Details	48
7.5.12	Add Note	49
7.5.13	Send Email	49
7.5.14	Show Calendar	50
7.5.15	Answer This Call [Call Pick-Up]	50
7.6	Configuration	50
7.6.1	Include External Contacts in all Searches	50

7.6.2	Show Monitored Users First When Searching.....	51
7.6.3	Always Sort New Search Results by Name .....	51
7.6.4	Include Department Name in Search .....	51
7.6.5	Clear the Search Box When Activated .....	51
7.6.6	Show Contact Groups .....	52
7.6.7	Including Contacts in Search Results .....	52
7.6.8	Show Call Duration .....	52
7.6.9	Menu Options on Drag & Drop.....	52
7.6.10	Contact Notes Folder.....	53
7.6.11	Show Most Searched Contacts .....	53
<b>8</b>	<b>Instant Messaging .....</b>	<b>53</b>
8.1	Online/Offline Indicator .....	53
8.2	Docking the IM Conversation .....	54
8.3	IM Conversation Overview .....	54
8.3.1	Docked IM Conversation .....	55
8.3.2	Undocked IM Conversation .....	56
8.4	Docking & Undocking IM Conversations .....	56
8.5	Starting an Instant Message Conversation.....	56
8.6	Adding Participants to an Existing Conversation.....	57
8.7	Sending Contact Directory Numbers .....	57
8.8	Notifications .....	58
8.9	XMPP Integration .....	58
8.9.1	XMPP Authentication .....	58
8.9.2	Managing XMPP Subscriptions.....	59
8.9.3	Instant Message Priority.....	61
8.10	Configuration.....	61
8.10.1	Send IMs to Offline Users .....	61
8.10.2	Show Instant Messages in Docked Panel .....	61
8.10.3	Always Show Docked Panel .....	62
8.10.4	Use Existing Conversation for Drag & Drop.....	62
8.10.5	When an Instant Message is Received .....	62
8.10.6	Play a Notification Sound .....	62
8.10.7	Show Popup Notification.....	62

8.10.8	Log Instant Message Conversations .....	63
8.10.9	Log Frequency & Type .....	63
8.10.10	Log Folder .....	63
<b>9</b>	<b>Show Calendar.....</b>	<b>64</b>
9.1	Configuration.....	65
<b>10</b>	<b>Remote Service Configuration .....</b>	<b>66</b>
<b>11</b>	<b>Personal Directory .....</b>	<b>67</b>
11.1	Add a Personal Directory Entry .....	67
11.2	Edit a Personal Directory Entry.....	68
11.3	Remove a Personal Directory Entry.....	68
11.4	Including External Contacts in the Default Contacts List.....	69
11.5	Import Personal Directory .....	69
11.6	Export Personal Directory.....	69
<b>12</b>	<b>Directory Integration .....</b>	<b>70</b>
12.1	Loading Directories.....	70
12.2	Configuring Outlook Contacts Preferences .....	70
12.3	Third Party Directories.....	71
12.4	Desktop Integration.....	72
<b>13</b>	<b>My Status (Quick Access Service Configuration) .....</b>	<b>72</b>
13.1	Configuring CommPilot Express States.....	73
13.1.1	Available: In Office.....	73
13.1.2	Available: Out Of Office .....	74
13.1.3	Busy .....	74
13.1.4	Unavailable .....	74
13.2	Do Not Disturb.....	74
13.3	Call Forward Always .....	75
13.4	Remote Office.....	75
13.5	Hot-Desk and Flexible seating .....	76
<b>14</b>	<b>Reception Call Centre Agent .....</b>	<b>77</b>
14.1	Joining & Leaving Queues.....	77
14.2	Changing ACD State .....	78
14.3	Personal Wallboard .....	78
14.3.1	Authentication & Configuration .....	78
14.3.2	Overview.....	80

14.3.3	Columns.....	81
14.4	Receiving Call Center Calls.....	82
14.5	Assigning Disposition Codes .....	82
14.6	Supervisor Escalation.....	84
14.6.1	Standard Escalation .....	84
14.6.2	Emergency Escalation.....	84
14.7	Activating Outbound DNIS.....	85
16.8	Report Viewer.....	85
14.9	Call Center Agent Configuration.....	86
14.9.1	Call Center .....	86
14.9.2	Agent .....	86
14.9.3	ACD State.....	87
14.9.4	Statistics.....	89
14.9.5	Reporting.....	90

## 1 ABOUT UNITY RECEPTION

---

Unity Reception is a Microsoft® Windows® based application designed for busy, front desk call handling environments or for those users who need visibility of a large number of concurrent calls and extended presence information for colleagues.

### Standard vs Enterprise Features

Unity is available in Standard and Enterprise variants. The features available are as follows:

#### Unity Reception Standard

Features provided;

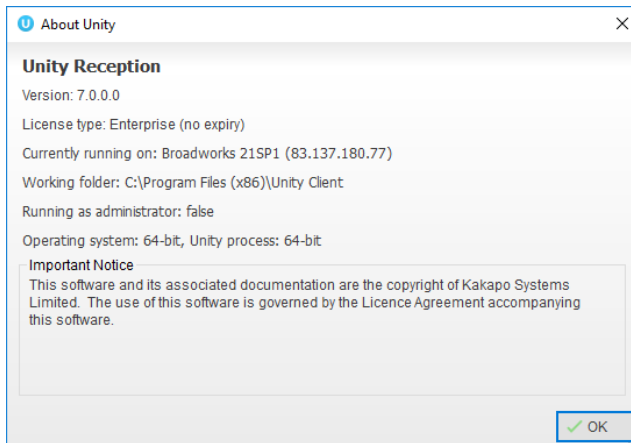
- 50 user fixed busy lamp field (BLF)
- Drag and drop call control [to make a call, release, IM, transfer, park etc]
- BroadWorks call center agent functionality for join/leave queue and changing ACD state
- Hold & Link User - Custom tagging of held calls [ie holding for Andrew Smith]
- Outlook Calendar integration to display the required users calendar events
- Visibility of the party the inbound caller was previously transferred to
- Ability to listen to, save and delete voicemails
- Add notes for inbound calls and all group or enterprise users
- XMPP support for IM&P with UC-One

## 1.1 Unity Reception Enterprise

All Unity Reception Standard features but also including;

- Unlimited dynamic busy lamp field [displays hook status of all matched users on contact search]
- Remote service configuration for all BroadWorks group and enterprise users
- Contact Groups

The current license & Unity version can be found by clicking Help > About from the main window.



## 1.2 System Requirements

### 1.2.1 Windows PC Requirements

- Unity will require approx. 20MB of hard drive space on the local machine
- By default the install directory is C:\Program Files (x86)\Unity Client
- Minimum computer spec: CPU: dual core 3Ghz. Ram: 4GB. Video card: 256MB onboard RAM. As a general note, the requirements to run Unity Reception are considerably less than those required to run Windows
- Unity can be rolled out as an MSI file, which supports automated installations using Active Directory group profiles and other automation mechanisms.
- Unity is only supported on Windows 7, Windows 8.1 and Windows 10
- Both 32 and 64-bit versions of Windows are supported. There are no special permissions required to install Unity, other than those granted during installation.

### 1.2.2 Internet & Firewall

Unity requires high-speed internet connectivity and access to the below locations, which may require firewall rules to be added on the customer premises:



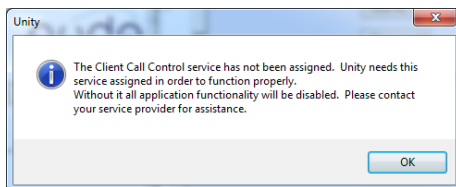
- TCP port 2208 to im.unityclient.com
- TCP port 2208 to the VoIP platform
- HTTP/HTTPS access to portal.unityclient.com
- TCP port 5222 to the XMPP server, if applicable

### 1.2.3 VoIP Platform Requirements

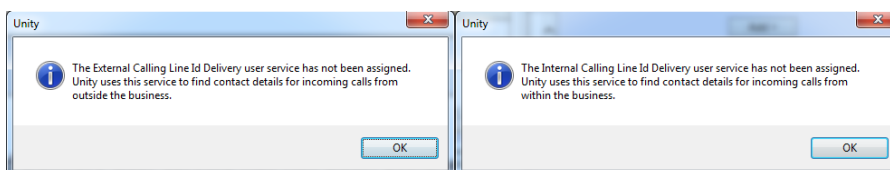
Unity Reception is supported on Broadworks R17 sp4 and above.

### 1.2.4 VoIP Platform Licence & Service Requirements

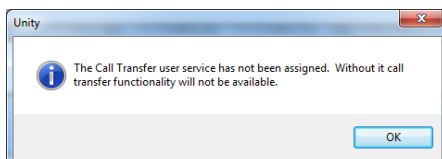
**Client Call Control:** The Client Call Control service is mandatory as this is the service that allows Unity to integrate with the VoIP platform. If this service is not assigned the user will be alerted and Unity will not provide any functionality.



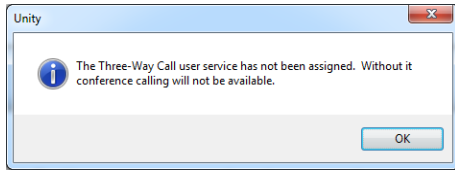
**Internal/External Calling Line ID Delivery:** The Internal Calling Line ID Delivery and External Calling Line Id Delivery services should both be assigned as these services allow Unity to identify calls to/from other users in the business. If not assigned Unity will function, but the user will be prompted that this functionality will not be available.



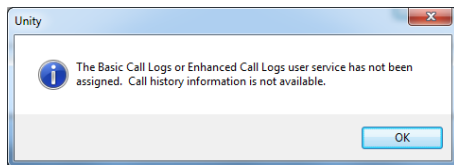
**Call Transfer:** The Call Transfer service is required in order to blind or announce transfer calls to internal and external numbers. Unity will alert the user if this service is not assigned.



Three Way Call or N-Way Call: Either the Three-Way Calling or N-Way Calling service must be assigned in order to provide conferencing functionality, Unity will alert the user if neither service is assigned.



Basic Call Logs or Enhanced Call Logs: Either Basic Call Logs or Enhanced Call Logs must be assigned to the user in order to see dialled, received and missed calls. Unity will alert the user is neither service is assigned.



### 1.2.5 Remote Service Configuration Requirements

Unity Reception allows remote configuration of some services for other users within the group or enterprise. The services available to be remotely configured are activate/deactivate DND, configure Call Forward Always or change the CommPilot Express profile. To do this the user must have a group or enterprise administrator account entered in Settings > Authentication.

### 1.2.6 Call Centre Agent Requirements

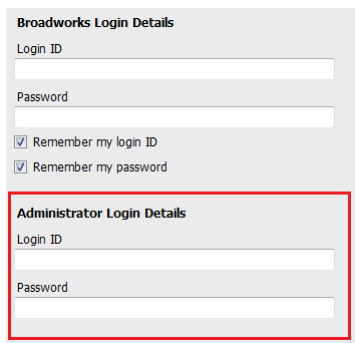
Unity Reception features the full capability of Unity Agent for use within a call center environment. To use this functionality, the user must have the Call Center Agent Standard or Premium service assigned.

A screenshot of a login form titled "Broadworks Login Details". It contains two sections: "Broadworks Login Details" and "Administrator Login Details". Each section has a "Login ID" field and a "Password" field. Below the "Broadworks Login Details" section, there are two checkboxes: "Remember my login ID" and "Remember my password", both of which are checked. The "Administrator Login Details" section also has "Login ID" and "Password" fields.

In addition, the Client Call Control service must be assigned to the call center the user is an agent of, if real-time call center statistics such as calls in queue are required. Call center authentication is outlined in section 14.1.

### 1.3 Initial Setup

The first time Unity is started you will be prompted to enter the connectivity and authentication details, as shown here. Unity can then retain these details for later use. The login ID and password will be assigned from your service provider. The administrator login is optional and only required for the remote service configuration feature, as outlined in section 10.



**Broadworks Login Details**

Login ID

Password

☒ Remember my login ID

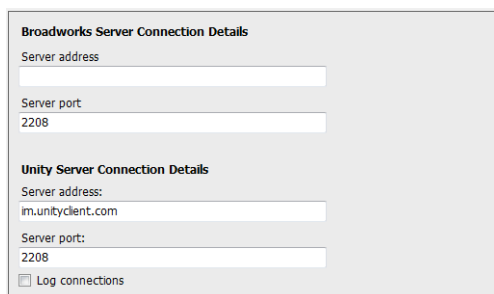
☒ Remember my password

**Administrator Login Details**

Login ID

Password

You may also be prompted for the server address of the VoIP platform, you can request this from your service provider if unknown. If this field is already populated do not change it. In most cases you can leave the server port as 2208. Please leave the Unity Server Connection Details as those prefilled.



**Broadworks Server Connection Details**

Server address

Server port

2208

**Unity Server Connection Details**

Server address:

im.unityclient.com

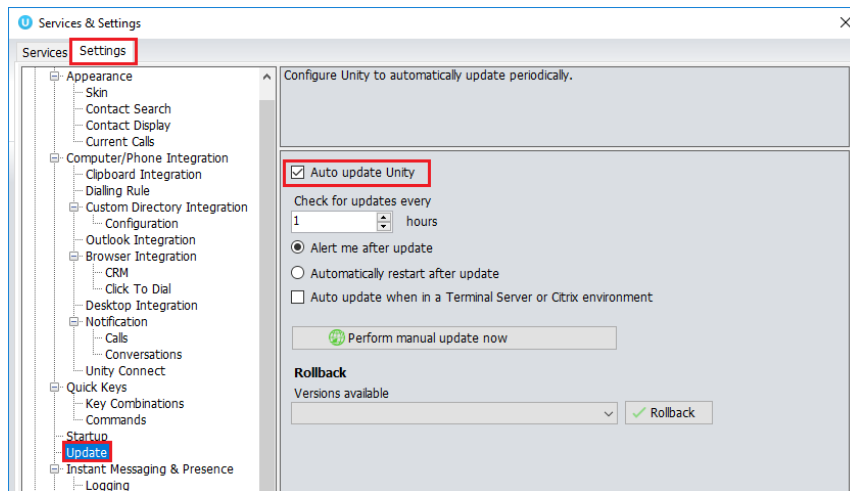
Server port:

2208

☐ Log connections

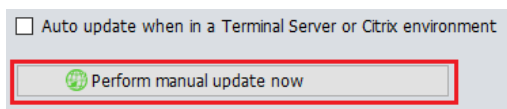
### 1.4 Manual and Auto Updates

Unity can be configured to automatically update when a new version is available. Simply tick the box in settings>update as shown below.



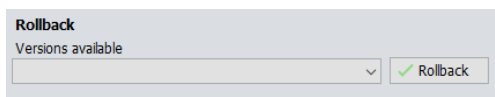
When a new version of Unity is available the user will be presented with a popup asking to restart Unity. Once Unity has restarted the latest version will be running. You can also configure how often Unity looks for updates under the auto update box.

To manually update Unity, click Perform manual update now and Unity will search for any new updates.

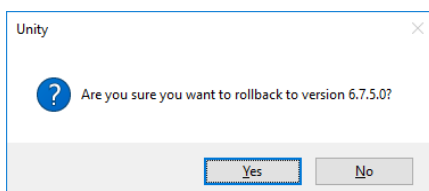


## 1.5 Rollback available

If rollback available is ticked in the Unity portal, then users can rollback to previous versions of Unity. Go to settings>update and the choose the desired version from the drop down menu.



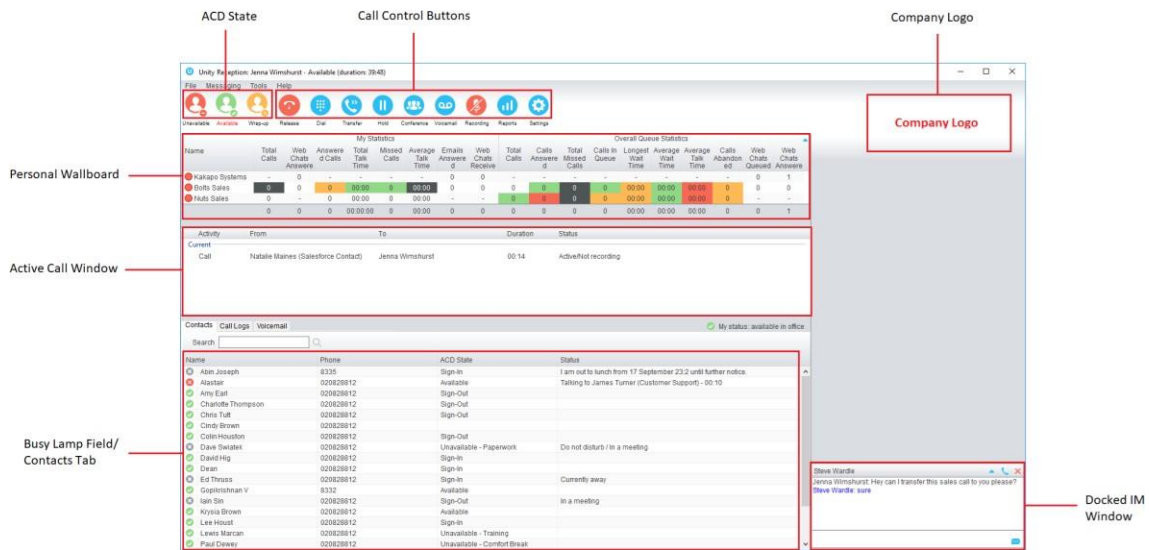
Once you've selected which version you want to rollback to click the green tick and the box below will appear.



Click Yes and then click Ok.

## 2 UNITY RECEPTION INTERFACE OVERVIEW


Unity is split into three functional areas; call control buttons, active call window and contacts [busy lamp field]. Contacts is a tab that can be toggled to display call logs and voicemail. Unity Reception can also act as an agent in a call centre environment. This is the case Unity will also display ACD state buttons and the Personal Wallboard, which shows current call center conditions. Call center agent functionality is covered in section 14.



### 2.1 Resizing Unity Reception

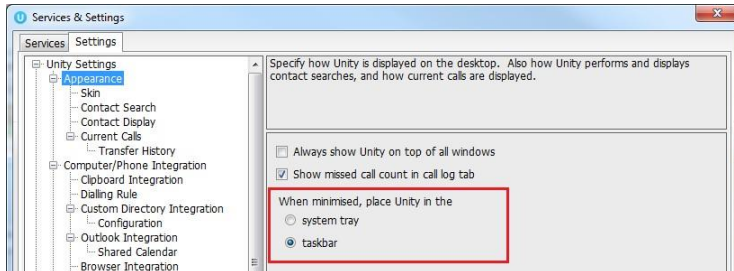
Unity can be dragged from any corner to the required size. The Active Call Window resizes independently by dragging the border at the bottom of the list [where the lower red line is in the illustration above]. When Unity is closed, all current dimensions will be saved.


### 2.2 Maximising and Minimising

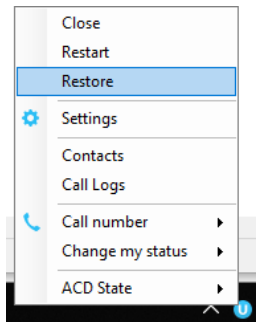
Unity can be maximised and minimised using the standard buttons in the top right hand corner of the application. When minimised, Unity can be configured to appear in the system tray in the bottom right hand corner of the desktop where the Unity icon  will be displayed. To re-open Unity simply double click this icon, or right click and select Restore from the menu, as shown here.

## 2.3 Using Unity Reception from the System Tray

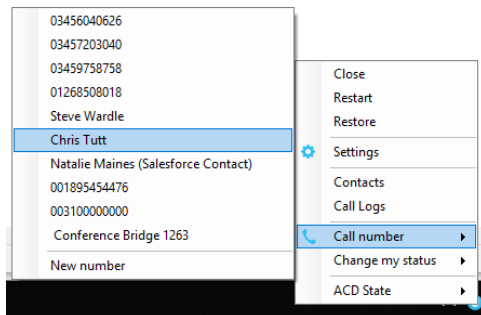
In its minimised state, Unity Reception can be configured to sit in the system tray. This is configured in Settings as below. The default behaviour is to minimise Unity to the taskbar at the bottom of the desktop.



Right clicking the Unity icon  in the system tray allows the user to dial or redial, configure settings such as CommPilot Express Profiles, DND, Call Forward Always or Remote Office. Note: Only those services that are assigned to the user will be displayed in the menu.

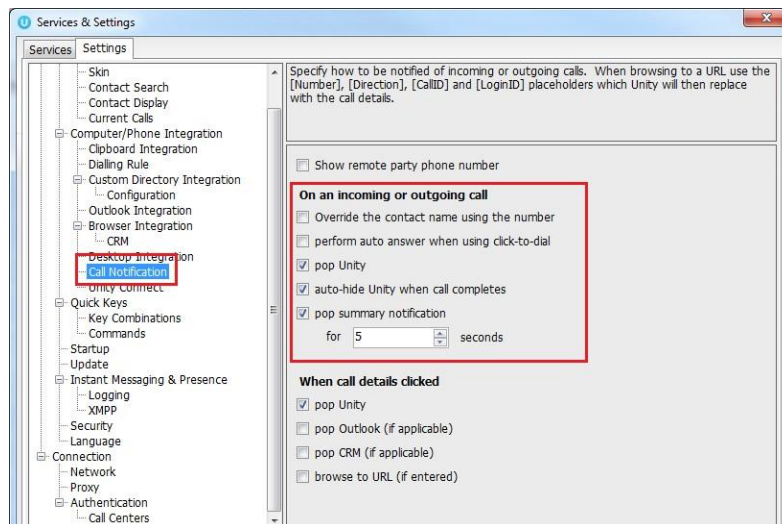


Selecting “Dial number” will provide a list of the last 10 dialled numbers as illustrated here. “New number” will pop a call box where the user enters the desired number using their keyboard.



## 2.4 Call Notification Preferences

Unity Reception can be configured to automatically display, or “pop” when a call is presented, or pop a “toast” summary notification above the system tray when a call is presented. Optionally Unity can also perform auto-answer when using click-to-dial, in which case the primary device of the user will automatically go off-hook [if supported and a speaker is present]. If this is not selected, then all IP phones will ring and the user will have to lift the handset to initiate the outbound call.



### 2.4.1 Show Remote Party Phone Number

This setting will configure to show the remote party number [if available], as shown below. This applies to both internal and external parties.

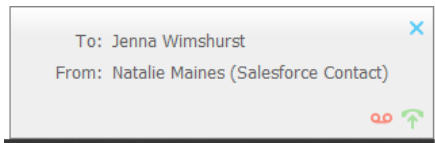
From	To	Duration	Status
Chris Tutt	Andrew Smith (0002)	00:00	Ringing

### 2.4.2 Override Contact Name Using Number

Unity can also perform a contact search based on the remote party number even if the name was provided by the Broadworks platform, this is especially useful when the name delivered through the PSTN is incorrect, for example in some cases this may always be “WIRELESS CALLER”.

## 2.5 Summary Toast Notification

The summary notification is presented for ACD and direct calls and can be used to route the call to voicemail or answer the call. Please note that if the notification is for an ACD call then the DNIS name may also be displayed if applicable.

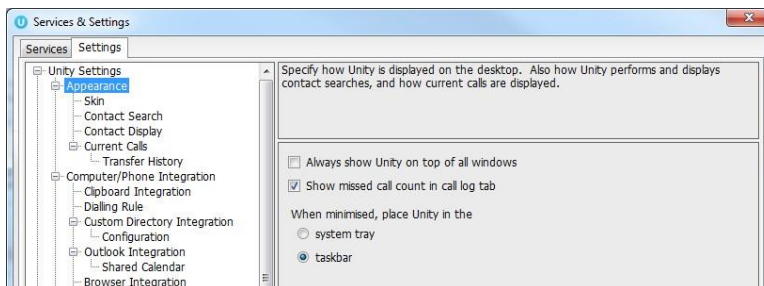


## 2.6 Browser Screen-Pop

The summary toast notification is also clickable and can be used to open the default browser to a preconfigured URL and append incoming call information, such as the remote party number. This feature can be used for screen popping CRM systems and other browser based applications. Further information on this feature is in a supplementary guide.

## 2.7 Appearance

The user can change the general appearance of certain Unity components using the settings shown below.

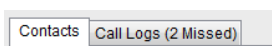


### 2.7.1 Always Show Unity On Top Of Windows

Unity will always show over the top of all windows when not minimised.

### 2.7.2 Show Missed Call Count In Call Log Tab

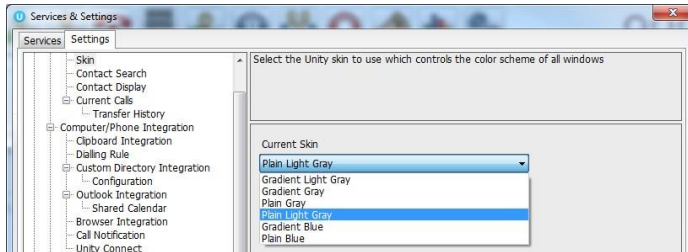
When enabled Unity will provide a count of the number of missed calls, as shown here.





## 2.8 Skins

The user can change the colour scheme used in Unity with pre-set skins, as shown below. Please note that gradient skins may not appear as clearly as expected if the graphics card is not adequate, this can especially be the case in Citrix or Terminal Service environments.



## 3 MAIN INTERFACE ELEMENTS

### 3.1 Call Control


Call Control buttons provide quick access to common telephone handling commands. Only services that are assigned to the user are displayed. For example, if Call Recording and Voicemail are not assigned then these buttons will not be displayed.

### 3.2 Active Call Window

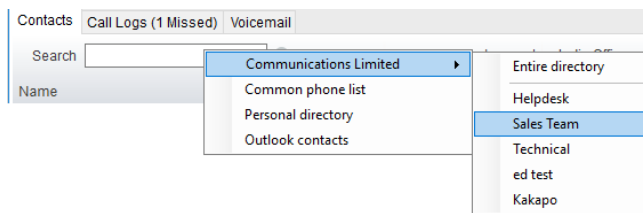
This provides a list of all current calls and their state. For example, ringing, active, held, parked etc. The duration of the call is also displayed, which is from the moment the call was first placed and does not reset when a call is held or retrieved. Unity will mirror any call handling made on the user's IP phone. For example, if the call is placed on hold on the handset, the user will show as being on hold in the Active Call Window. If there are multiple calls in the Active Call List then the correct call must be selected before performing the call control action, similarly a call can be dragged over the Call Control button to perform the action on that call.

### 3.3 Contacts List [Busy Lamp Field]

This panel will display up to 50 monitored users, displaying their unavailable, available, Engaged or Ringing state as graphical icons, which are further outlined in section 8.1

The user can also perform a contact lookup which will search all directories available in Unity and return any internal or external contacts that meet the search criteria. External contacts or internal contacts that cannot be monitored through the BLF are easily identified .

Right-click the search box in the Contact list to view all directories available in Unity, then select the directory to load those contacts in the list, as below.

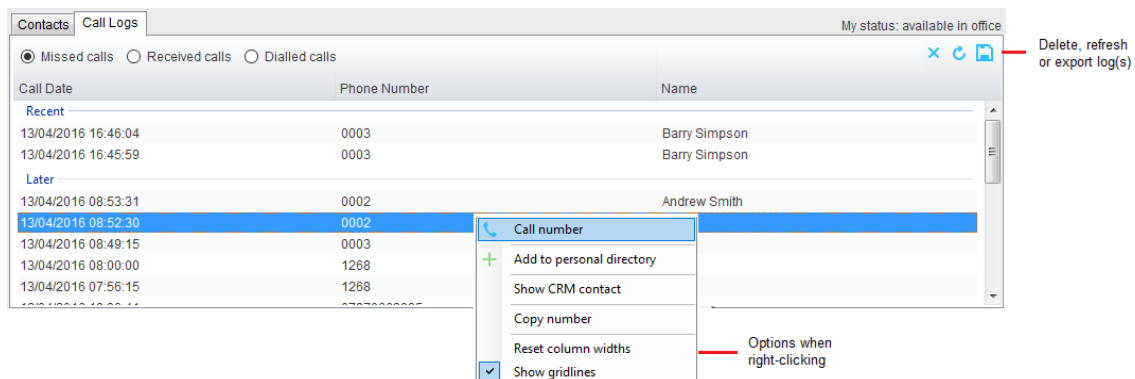


### 3.4 Call Logs

Toggling the bottom Contacts panel to Call Logs will display missed, received and dialled calls. Missed calls will include both direct inbound direct calls, as well as ACD and hunt group calls. 20 numbers can be stored unless the user has Enhanced Call Logs service assigned.

To call any entry in a call log, simply double-click, right-click and select “Call number” or drag the call log entry into the Active Call List.

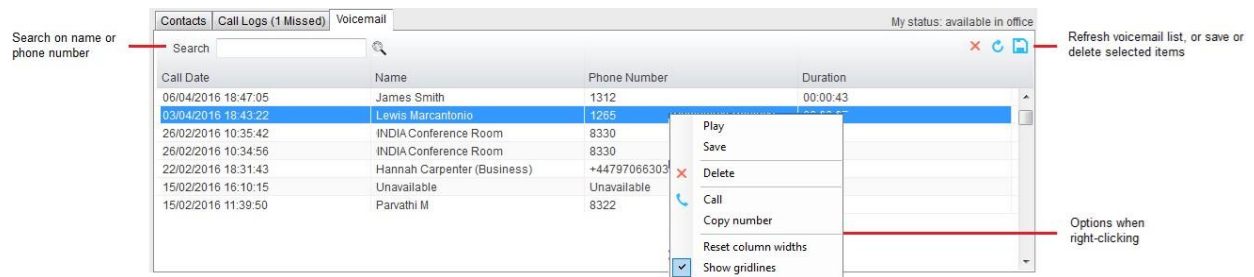
Any recently missed calls are easily identified, as shown below. This will match the missed call count outlined in section 2.7.2.



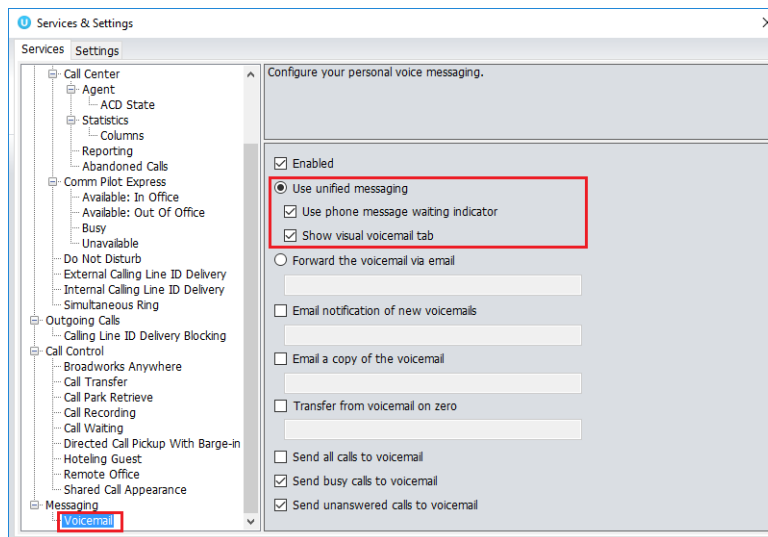
Call logs can also be deleted, refreshed or exported with the icons at top right of the panel.

### 3.5 Visual Voicemail





The Voicemail tab allows the user to interact with their voice mailbox to listen to, save and delete voicemails without using the phone.



The Voicemail tab is only displayed if the Voice Messaging User service is active and configured to use unified messaging. The “Show visual voicemail tab” setting must also be enabled, as shown below.




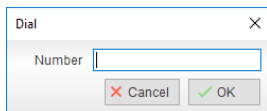
## 4 CALL CONTROL

All calls are managed through the call control buttons at the top of the main window. These buttons will change depending on the state of the selected call, or the only call if there is only one call in the Active Call Window. For example, the Answer/Release   and Hold/Retrieve   buttons toggle as only one of these options will be valid at any time. When an inbound call is ringing, Answer becomes the valid option. Once the call is active the icon will toggle to Release as hanging up is the only valid option.

## 4.1 Making a Call

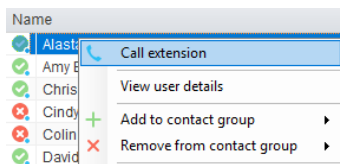
### 4.1.1 Using the Dial Window

Click the Dial button  to bring up the Dial dialogue box, as shown here. Using the computer keypad enter the desired number and press Enter or click OK to make the call. The primary phone will default to using hands-free speakerphone, if configured as outlined in section 2. Otherwise you will need to lift the handset to establish the outbound call.



### 4.1.2 Using the Contacts Panel

Double click a user icon or right click and select “Call extension” or “Call number” if right-clicking on an external contact. It is also possible to call an internal user’s mobile number if entered in their profile.



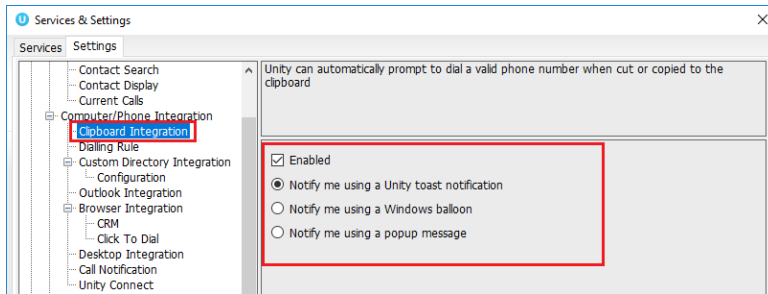
### 4.1.3 Drag and Drop

Left click a user in the Contacts panel and drag the icon up to the Active Call Window. This will open a call to that contact.


### 4.1.4 Dial from the Clipboard

Unity can be configured so that whenever a number is copied to the clipboard [from any application in Windows], Unity will prompt the user to dial that number.


This feature can be activated [the default] or deactivated through settings.



## 4.2 Answer a Call

When Unity displays an inbound call, click the Answer icon  or double click the call in the Active Call Window to answer the call. Your primary phone will automatically answer the call using hands-free speakerphone, if it supports this feature with Unity. If there is an active call in progress, you will need to click the new inbound call in the Active Call List before clicking Answer, this will automatically place the first call on hold. Please note that answering a call by lifting the handset on the desk phone will have the same effect as clicking Answer in Unity.

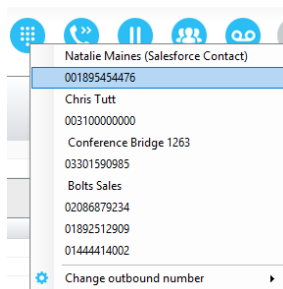
## 4.3 End a Call

Click the Release button  to end the currently selected call. If there are multiple calls in the current call list, make sure you select the right call before clicking Release.


**Note:** Replacing the telephone handset will also end the call, which will then be removed from the Active Call Window.

## 4.4 Redial

You can right-click the Dial button to see a list of the last 10 dialled numbers. Simply click on an entry to dial the party, as shown here.



## 4.5 Send Call to Voicemail

To send an inbound caller directly to your voicemail click the Voicemail button . Please note this button will not be visible if the Voice Messaging User service is not assigned or is currently disabled.


### 4.5.1 Retrieving Voicemail Messages

When no calls are currently selected, clicking the Voicemail button will dial the user into their voicemail using the user's primary device. This feature has been superseded by the Voicemail tab as outlined in section 3.5.

## 4.6 Transferring a Call

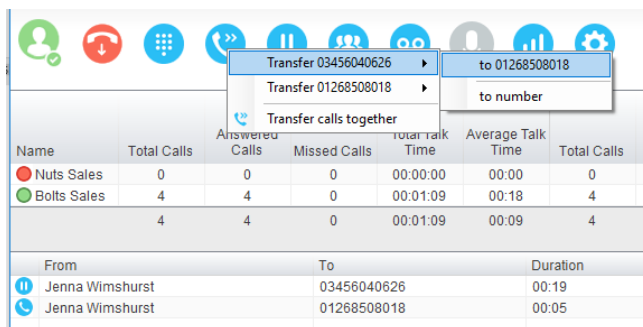
There are two ways to transfer a call; announced transfer, where you introduce the call to the receiving party before putting the call through, and blind transfer, where you transfer the caller directly to a recipient without introducing the call.

### 4.6.1 Announced Transfer using Transfer Button

With a call in progress, make a new call to the desired destination extension or number as described in section 4.1. This will automatically place the first call on hold and will add a new call in the Active Call Window. Once the called party answers, click Transfer  and select the context menu option to transfer both calling parties together. Both calls will now disappear from the Active Call Window.

**Note:** The user is not limited to transferring received calls. The user can make two outbound calls and then use announced transfer to join them together.

#### Example 1 – Transfer with two live calls



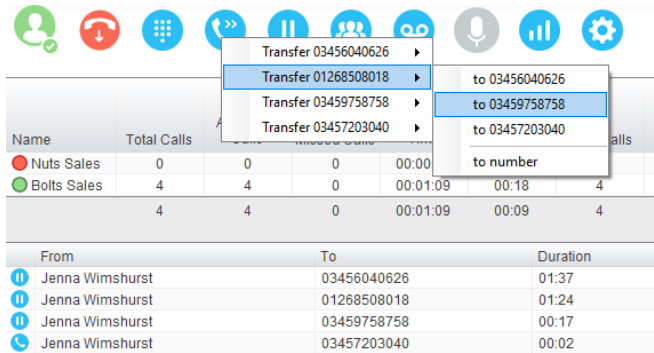
The screenshot shows a call management interface. At the top, there is a toolbar with various icons. A context menu is open, showing options to transfer calls. Below the menu is a table with call statistics and a list of recent calls.

Name	Total Calls	Answered Calls	Missed Calls	Total Talk Time	Average Talk Time	Total Calls
Nuts Sales	0	0	0	00:00:00	00:00	0
Bolts Sales	4	4	0	00:01:09	00:18	4
	4	4	0	00:01:09	00:09	4

From	To	Duration
Jenna Wimshurst	03456040626	00:19
Jenna Wimshurst	01268508018	00:05

## Example 2 – Transfer with four live calls



The screenshot shows a call center interface with a top toolbar containing icons for user, call, queue, transfer, hold, mute, and settings. A context menu is open, showing transfer options for four different numbers. Below the menu is a table with columns: Name, Total Calls, and a grid of call statistics. At the bottom is a call log table with columns: From, To, and Duration.

Name	Total Calls	03456040626	01268508018	03459758758	03457203040	00:00	00:01:09	00:18	00:09	4
Nuts Sales	0	0	0	0	0	00:00				
Bolts Sales	4	4	0	0	0	00:01:09				4
	4	4	0	0	0	00:01:09				4

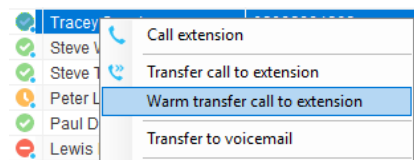
From	To	Duration
Jenna Wimshurst	03456040626	01:37
Jenna Wimshurst	01268508018	01:24
Jenna Wimshurst	03459758758	00:17
Jenna Wimshurst	03457203040	00:02

### 4.6.2 Announced Transfer using Drag & Drop

The easiest way to perform an announced transfer is simply to drag & drop one call on top of the other in the Active Call Window. This will join the calls together and remove them from the Active Call Window.

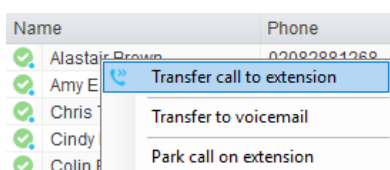
### 4.6.3 Announced Transfer using Warm Transfer Button

Unity offers a feature called Warm Transfer whereby the held call and the transferee are linked so that when either call is selected in the Active Call Window they can be joined by clicking the Warm Transfer button, as shown below.

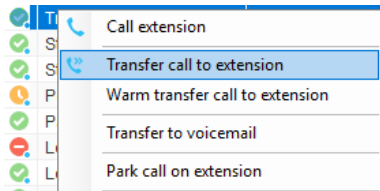


### 4.6.4 Blind Transfer using Drag & Drop


Unity Reception can be configured to automatically blind transfer a call by dragging the call from the Active Call Window and dropping it on a user icon or number icon in the Contacts panel, or dropping it onto a call center queue [if Reception is configured as an agent with call center queues, as outlined in section 14].

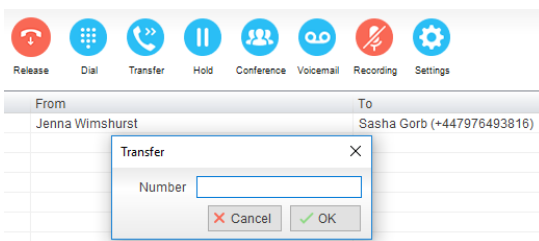


Note: Unity can be configured to display a menu when dropping a call onto a user icon. If only blind transfer is selected, then this will be performed automatically. If menu options are selected when dropping the call, click “Transfer call to extension” to perform blind transfer. For more information on drag & drop please refer to section 6.



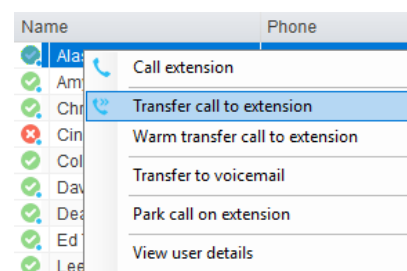
#### 4.6.5 Blind Transfer using Transfer Button

Select a call in the Active Call Window [if there are multiple calls present] and click the Transfer button . In the Transfer window enter the destination and click OK.



#### 4.6.6 Blind Transfer using Right Click

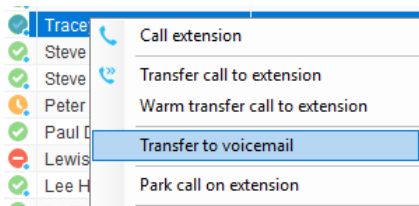
Select a call in the Active Call Window [if there are multiple calls present] then right click the recipient icon or number in the Contacts list. Select “Transfer call to extension” to blind transfer the call to an internal user, or “Transfer call to number” to blind transfer to an external contact. It is also possible to transfer to the contact’s mobile phone if they are an internal user and the mobile number is entered in their profile.





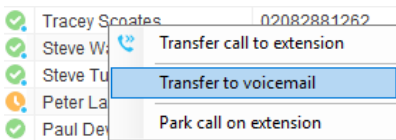
#### 4.6.7 Transfer to Voicemail using Right Click

The option to Transfer to voicemail is valid only for internal contacts that have Voicemail assigned and activated. Select a call in the Active Call Window [if there are multiple calls present] then right click a user in the Contacts list and select “Transfer to voicemail”. This will send the selected call directly to the destination extension voicemail without introducing ringing.



#### 4.6.8 Transfer to Voicemail using Drag & Drop



If configured, Unity will display “Transfer to voicemail” as a context menu option when a call is dragged onto an internal contact in the Contacts panel. For more information on menu options when using drag & drop please refer to section 6.




#### 4.6.9 Transfer to Mobile


As mentioned, if the selected contact is an internal user and has a mobile number entered as part of their profile, you have the option to right click and select either “Call Mobile” [to perform an announced transfer] or “Transfer Call to Mobile” [to perform blind transfer]. This also applies when dragging a call, if configured in Settings as outlined in section 6.

### 4.7 Call Hold/Retrieve


The Hold/Retrieve   function toggles depending on the status of the currently selected call. Hold is only available for an active call while retrieve is only a valid option for a call currently on hold. When a call is on hold, the blue hold icon is shown in miniature to the left of the call in the Active Call Window and the status is On Hold, as shown below.

From	To	Duration	Status
 Jenna Wimshurst	Sasha Gorb	00:04	On hold

#### 4.7.1 Placing a Call on Hold

To place a current active call on hold, select the call [if there are multiple calls in the list] and press the hold button.  The call status will now show as on hold in the Current Call Window and an icon will appear alongside the call to illustrate that it is currently held.



#### 4.7.2 Retrieving a Held Call



Select the call [if there are multiple calls in the list] and click the retrieve button , the “held” image alongside the call will disappear. You can also double click the call to retrieve it, if configured to do so in Settings. Please note that any other active calls will be placed on hold before the selected call is retrieved, meaning you can toggle between calls by double-clicking them in the Active Call Window.

### 4.8 Conference Calling



A conference call can be established with any combination of internal and external numbers. The total number of parties that can be supported is determined by service assignment. The Three-Way Calling user service supports conference calls with two other parties only while the N-Way Calling user service supports conference calls with more participants.

#### 4.8.1 Starting a Conference Call


Once an active call is established [that you have either made or received] call a second person. You can do this by clicking the Dial button  or double clicking a user in the Contacts panel or Search, or Call Log lists. Making this call will automatically place the first caller on hold. Once the second party has answered the call, click the Conference button  and a new conference will be created between you and the other two parties. This is represented in the Active Call Window as shown below. Please note that if there are more than two calls in the Active Call Window then the two calls to conference will need to be selected.



From	To	Duration	Status
 Sasha Gorb	Jenna Wimshurst	00:15	Active (conference)/Not recording
 Jenna Wimshurst	01268508018	00:02	Active (conference)/Not recording

Selecting either call and clicking hold will place the conference call on hold, during which time the other callers can still talk to each other. The Active Call Window will be updated to illustrate that the conference is on hold, as shown below.


	From	To	Duration	Status
	Sasha Gorb	Jenna Wimshurst	00:36	On hold (conference)
	Jenna Wimshurst	01268508018	00:23	On hold (conference)

#### 4.8.2 Adding Multiple Parties

Once a three-way conference is established you can add additional parties to create an n-way conference. Select the call to add and select Conference , you will be prompted to add the remote party to the existing conference, as shown below. You can see that the entire conference is held when processing other calls through the Active Call Window.

	From	To	Duration	Status
	Sasha Gorb	Jenna Wimshurst	01:30	On hold (conference)
	Jenna Wimshurst	01268508018	01:17	On hold (conference)
	Jenna Wimshurst	03456040626	00:05	Active/Not recording


Unity

 Do you want to add 03456040626 to the conference?

Yes No

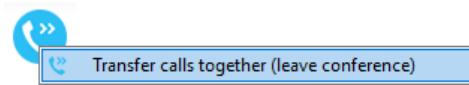
Please note that conference calls can be started with any two remote calls, regardless of the direction of either call or if the number is internal or external [for example between two mobile calls].

#### 4.8.3 Dropping a Participant

To remove a caller from the conference call but continue speaking to the other caller[s], simply select the call to release in the Active Call Window and click the Release button  as you would normally. This will release the selected party and will show only the remaining party[s] in Active Call Window.

#### 4.8.4 Ending a Conference

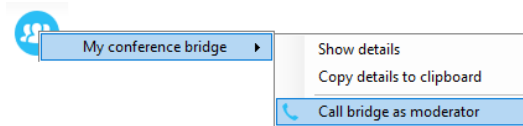
If the user wants to leave a three-way conference but allow the remote parties to continue talking, perform an announced transfer to join the calls together.



Otherwise to end the conference simply hang up the phone.

#### 4.8.5 Conference Bridge Integration

Unity allows the user to right click the Conference button to view or copy details of their “reservation less” conference bridge(s), or to call a bridge as a moderator. If this has been configured in BroadWorks.

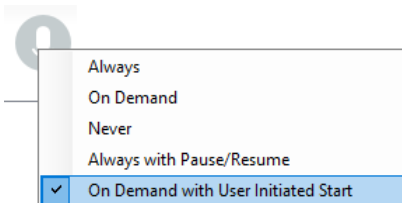


### 4.9 Call Recording

If the Call Recording User service is assigned then the user may be able to manage call recording, although this depends on the functionality offered by the VoIP platform and service configuration parameters. If the functionality isn't available or is hidden then the Call Recording button is not displayed in the main window.

#### 4.9.1 Changing the Call Recording Option

Right-click the Recording button to select the call recording option, as shown.







Please note that depending on permissions this may not be available, also not all the displayed options may be available. Call Recording options are:

Option	Description
<b>Always</b>	Calls are automatically recorded from the beginning of the call. There is no option to pause or stop recording.
<b>On Demand</b>	Calls are not automatically recorded from the start, but recording can be started at any time during the call in which case the entire call will be recorded. Stop and pause are not available with this option.
<b>Never</b>	Calls are never recorded and recording cannot be started while a call is in progress.
<b>Always with Pause/Resume</b>	All calls are automatically recorded from the beginning of the call, but recording can be paused and resumed, which is especially important when taking credit card details over the phone [that need to be omitted]. This will still result in a single recording for the call, regardless of how many times it was paused and resumed.
<b>On Demand with User Initiated Start</b>	Calls are not automatically recorded from the start, but recording can be started at any time. However, any conversation before the recording was started will not be included in the recording. Recording can be paused and resumed, which will result in different recordings being created for a single call.

#### 4.9.2 Controlling Call Recording

You can start, stop, pause and resume call recording depending on the Call Recording Option currently selected. Left-click the Recording button to manage recording for the selected call in the Active Call Window will toggle the option depending on the current recording state. The call

recording button will change   to indicate this. When set as Always with Pause/Resume,

the user can left click to Pause/Resume and the button will toggle as Resume [recording]  or Pause .

When set as “On Demand With User initiated Start” left clicking the call recording button presents the following menu to allow the user to control the call recording behaviour.

Click the Recording button again to continue/restart recording the call.

The Active Call List will also indicate the recording state of all calls, as shown below.

From	To	Duration	Status
Chris Tutt	Barry Simpson (0003)	00:19	Active/Recording paused

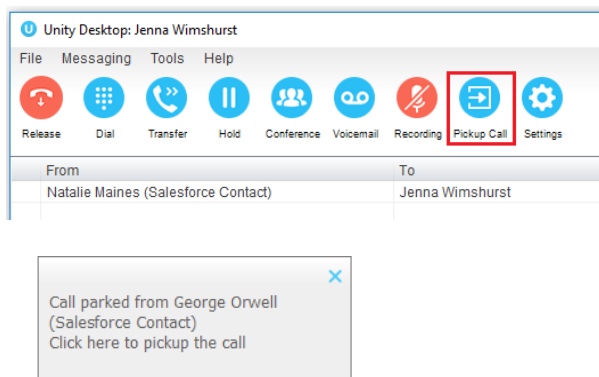
## 4.10 Using Paging Groups

Unity Reception allows the user to use paging groups to make instant calls to multiple users. When Unity dials a paging group [which are setup in the VoIP platform] all configured user's phones will automatically go "hands-free" [meaning the speaker will be activated] so that whatever the receptionist says is broadcast to all phones and played through the speaker. Of course if a user is already on the phone they will not be included in the broadcast.

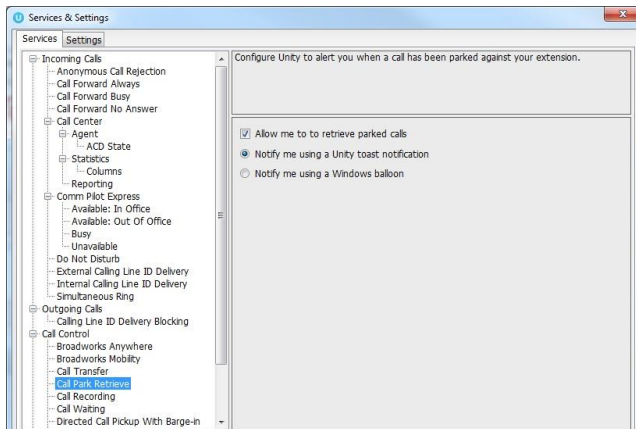
If a user is an originator for one of more paging groups, Unity will display the Announce button which will automatically dial the paging group if only one is configured, otherwise it will display a list of all paging groups that are available for the receptionist to use. Once the user selects the paging group Unity will dial that number and initiate the broadcast.

## 4.11 Retrieving a Parked Call

Unity offers a unique feature that allows the user to be notified when a call is parked on their extension, as shown below. Unity will automatically display a Pickup button and a "toast" notification popup, if the user clicks on either then the parked call will be retrieved to the user's primary device.



This can be configured through Settings, as shown below.



## 5 ACTIVE CALL WINDOW

---

The Active Call Window gives visual representation of the status of all calls the user receives or is currently managing.

### 5.1 Window Layout

The list is available in detail view only, columns widths can be changed which is stored between Unity sessions.

From	To	Duration	Status	Notes
Barry Simpson	Chris Tutt	00:07	Active/Not recording	Previously transferred to Andrew Smith
Andrew Smith	Chris Tutt	00:00	Ringling	

#### 5.1.1 From

This column will display the name/number of the person who made the call. Therefore, it will be the remote calling party for an inbound call and the currently logged in user for an outbound call. If the name has not been delivered by the VoIP platform then Unity will use the remote party number to search the Group/Enterprise directory, the common and personal phone lists, Outlook, speed dials and any external directories that have been configured, as outlined below.

#### 5.1.2 To

This column will display the name/number of the person called, if the call is through a call center it will display the name of the call center. If making about outbound call Unity will attempt to find the remote party name as outlined above.

#### 5.1.3 Duration

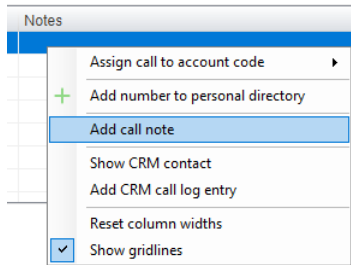
This displays the total time elapsed since the call was first answered. The timer does not restart when the call is placed on hold.

#### 5.1.4 Status

This will show the current state of the call, which can be “Ringling”, “Active”, “On Hold”, “Parked for...” or “Camped for...” The current recording state will also be displayed if configured in Settings.

### 5.1.5 Notes

The Notes column will show the destination the call was previously transferred to for additional call handling information for repeat callers.



The user can also right click the call and select “Add call note” or double click in the Note field to add a note, if configured in Settings. This note is shared between Unity clients so that when the call is transferred the transferee will see the same note in their Unity client.

From	To	Duration	Status	Notes
Natalie Maines (Salesforce Contact)	Jenna Wimshurst	01:07	Active - Not recording	Wants to talk about the new sales promo

Receptionists can optionally see all calls in queue for the Call Centers they are joined to, as shown below. This is configured in Settings>Agent>Display queued call center calls in the list.

From	To	Duration	Status
Hot Desk 3 - 9103	Bolts Sales	01:48	Queued at position 1
Charlotte Quartly	Bolts Sales	01:25	Queued at position 2

## 5.2 Resizing the Current Call List

The bottom border of the Active Call Window can be dragged down to display as many or as few calls as necessary. Unity will save these dimensions when closed. Unity can also be configured to automatically resize to include new calls, as outlined in section 5.6.1.

## 5.3 Managing Multiple Calls

To manage a particular call, first select it by clicking it in the Active Call Window. If there is only one call in the list it will be selected automatically. You can then use the call control buttons to perform different actions on the call. There is no limit to the number of calls that can be displayed




in the Active Call Window, this is limited by the number of simultaneous calls allowed and if the Call Waiting user service is assigned and active.

You can also double-click an incoming [unanswered] call to answer it, or to retrieve it if currently on hold, if configured in Settings. Please note if this is not selected then double-clicking a call in the Active Call Window will allow a note to be entered, assuming the Notes column is being shown, as outlined in section 5.6.5.

#### 5.4 Configuring Which Calls are Displayed in Active Call Window

The Active Call Window can be configured to retain visibility of processed calls, allowing the Reception user complete control of call management, as shown below.

From	To	Duration	Status
 Natalie Maines (Salesforce Contact)	Jenna Wimshurst	00:05	Call parked for Paul Dewey

Parked, camped and linked calls [explained in section 7.5] can all be displayed in the Active Call Window and retrieved at any time.

#### 5.5 Transfer History

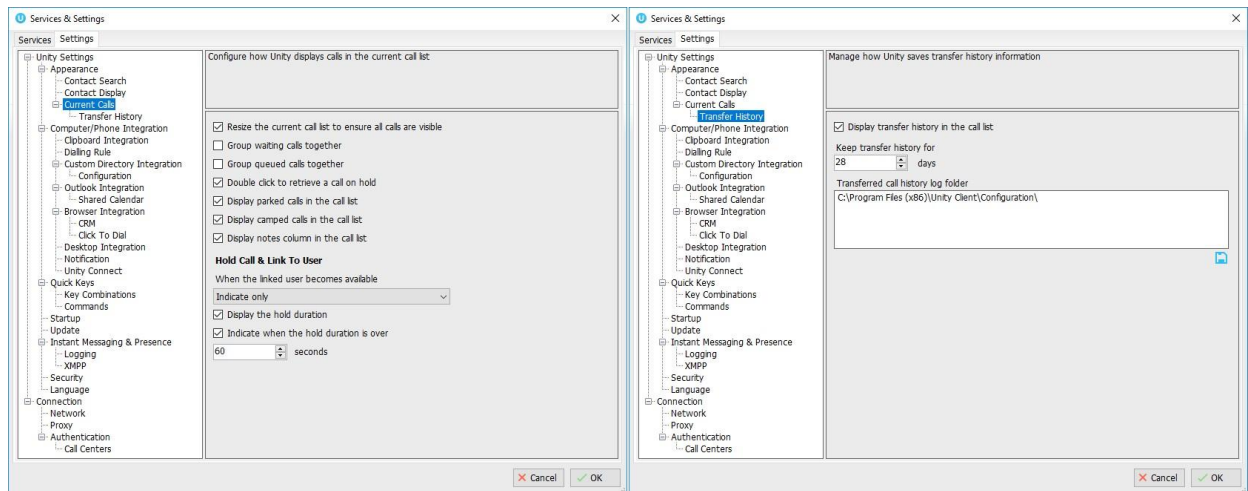
Unity can be configured to indicate who the remote party was last transferred to.

This is displayed in the Notes field, meaning it is only available if this column is being displayed.

From	To	Duration	Status	Notes
Barry Simpson	Chris Tutt	00:26	Call parked for Andrew Smith	Previously transferred to Andrew Smith

#### 5.6 Configuration

The Active Call Window options can be configured in Settings as shown below.



Options are immediately applied when the OK button is pressed.

### 5.6.1 Resize the Current Call List

If set then the Active Call Window will automatically resize to ensure all calls are visible, up until there are 10 calls in the list at which point scrollbars will be used.

### 5.6.2 Grouping Calls

Unity can group waiting [including held, parked, camped and linked] calls together, as shown below.

From	To	Duration	Status	Notes
<b>Current</b>				
Chris Tutt	My Mobile	00:00	Ringing	
<b>Waiting</b>				
Barry Simpson	Chris Tutt	00:40	On hold	Previously transferred to Andrew Smith
Andrew Smith	Chris Tutt	00:33	On hold	

### 5.6.3 Double Click to Retrieve

When this setting is enabled, you can double-click on a held call in the Active Call Window to immediately place any active calls on hold and retrieve the selected one.

### 5.6.4 Display Parked & Camped Calls

When activated, Unity will retain all parked and camped calls in the Active Call Window, as described in section 7.5.

### 5.6.5 Display Notes

This setting allows notes to be displayed against calls in the Active Call Window, if this setting is disabled the Notes column will not be displayed.

### 5.6.6 When Linked User Becomes Available

When using the Hold & Link feature [as outlined in section 7.5.5] Unity can either alert the receptionist that the monitored user is now available, prompt to transfer or automatically transfer.

### 5.6.7 Transfer History



Transfer history is only available if the Notes field is being displayed. You can configure Unity to store transfer history information for a defined duration and can specify where the history should be stored if sharing information between Unity Reception clients.

## 6 DRAG AND DROP

---

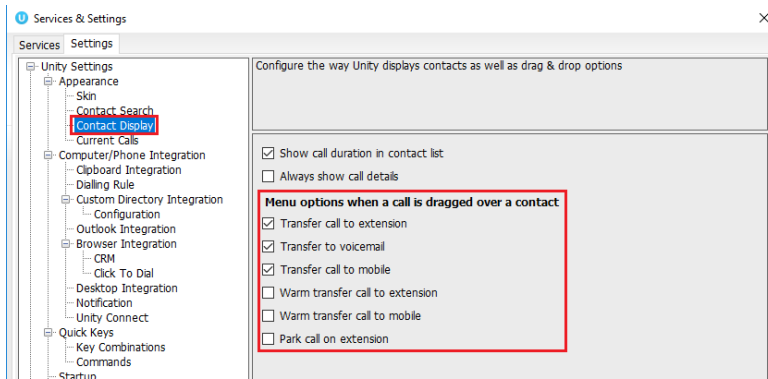
Many common call handling actions can be performed with drag and drop, as well as right click and call control buttons.

### 6.1 Make a Call to a User or Number

Drag a user icon  or a speed dial shortcut icon  from the Contacts panel up into the Active Call Window to make a new call to the selected user or number. Call logs and voicemail items can also be dragged into the Active Call Window to call.

### 6.2 Transferring a Call to a User

Drag a live call onto a user to either perform blind transfer, or to populate a drop list with call handling options. Drag and drop configuration is configured through Settings.




### 6.3 Make a Call to a Call Center

When Unity Reception is configured with call center agent functionality, drag a call center queue from the Personal Wallboard to the Active Call Window to make a call to that call center.

### 6.4 Transferring a Call to a Call Center

When Unity Reception is configured with call center agent functionality, you can drag a current call in the Active Call Window and drop it on a call center in the Personal Wallboard. This will blind transfer the call to that call center.

### 6.5 Send to Voicemail

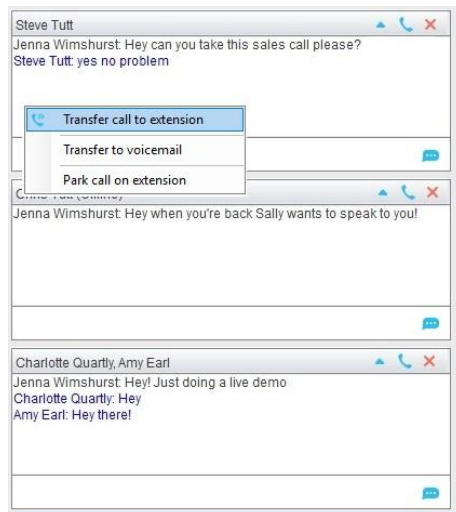
Dragging an unanswered call from the Active Call Window over the Voicemail button  will blind transfer the incoming call to the user's voicemail. The Voicemail button will only be displayed in Unity if the Voice Messaging User service is assigned and active.

### 6.6 Call Control

Dragging a call over the Hold/Retrieve, Answer/Release or Transfer buttons will perform that action on the selected call in the Active Call Window.

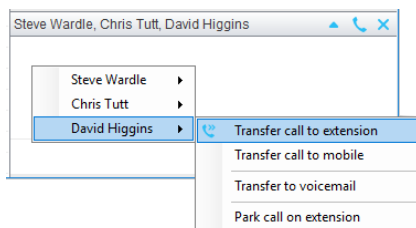
### 6.7 Manage Instant Messages

As illustrated in section 2, Unity offers a docked Instant Message (IM) panel, which fully supports drag & drop actions. The IM panel can always be displayed or only displayed when required, as configured through settings and outlined in section 8.10.



Drag an internal contact into the docked IM panel to send an instant message to that user. You can easily drag additional users into the same IM conversation to create group chat, and a call can be dragged from the Active Call Window into an IM conversation to quickly blind transfer to that user. This is particularly useful if you want to check the transferee's availability before transferring a call.

If there are multiple users in the IM conversation, then a context menu will be displayed.



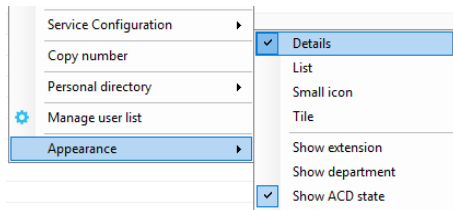
Please see section 8 for a full overview of Instant Messaging.

## 7 CONTACTS PANEL [BUSY LAMP FIELD]

The Contacts tab gives a visual indication of the status of users [within the group/enterprise] including current hook state and availability. Unity displays up to 50 internal users by default but will dynamically monitor any internal users returned through search results.

### 7.1 Contact Panel Display Options

There are four different views available, as outlined below. Right-click anywhere in the Contacts panel and select Appearance list to change the view.

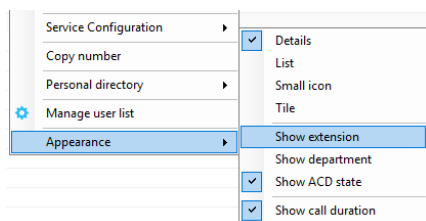


#### 7.1.1 Details View

This view provides by far the greatest amount of detail, but requires more space [although the list can be shortened in which case scrollbars will automatically appear]. This is the default view when displaying search results.

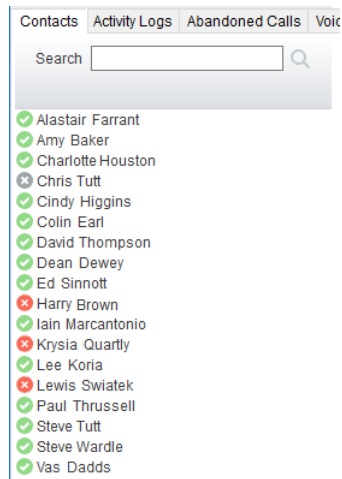
Name	Phone	ACD State	Status
Chris Tutt	020828812	Sign-Out	
Cindy Baker	020828812		
Colin Wardle	020828812	Sign-Out	
Dave Baker	020828812	Available	Talking to +447717580512 - 20:22 / In a meeting
David Higgins	020828812	Sign-In	
Dean Thompson	020828812	Sign-In	
Ed Thrus	020828812	Sign-In	Currently away
Gopikrishnan V	8332	Available	
Iain Sin	020828812	Sign-Out	
Krysia Swiatek	020828812	Available	
Lee Hous	020828812	Sign-In	
Lewis Marcan	020828812	Available	Talking to Conference Bridge - 18:35 / Currently busy
Paul Farrant	020828812	Available	Talking to Alastair Brown - 02:00
Steve Tutt	020828812	Unavailable - WebChat	
Steve Wardle	020828812	Unavailable - Comfort Break	In a meeting until 3pm
Vas Koria	020828812	Available	

With this view the sort order and width for each column can be set, which is saved when Unity is closed. You can also configure Unity to display or hide the extension, department, ACD state and call duration columns.



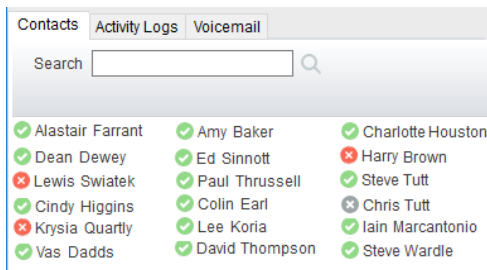
### 7.1.2 List View

This option will display all users in a list without detail, as shown below. It is only recommended when the default contact list contains many entries and space is limited.



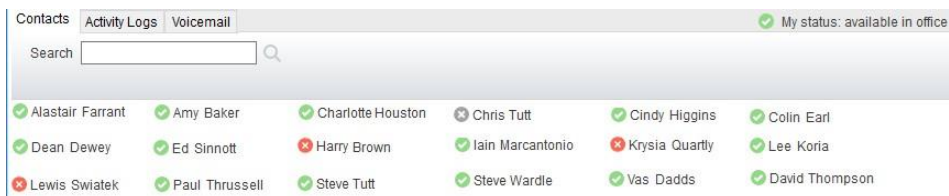
### 7.1.3 Small Icon View

This view combines a simplified look and space reduction.



### 7.1.4 Tile View





This view is similar to Icon view but uses more white space to provide a cleaner look.



In both the List, Small Icon and Tile views, hovering the mouse over the image will provide more information about the monitored user, as outlined in section 7.2.1 below.

## 7.2 User Icons

There are four main user icons states shown for internal users in the Contacts panel, regardless of the view chosen. However, because the image will also illustrate if the monitored user is online (meaning they are currently logged into Unity) there are eight possible images, as outlined below.

	Available	The monitored user extension is on hook
	Ringing	The monitored user extension is ringing
	Engaged	The user is on the phone
	Do Not Disturb	The user has selected DND or Unavailable profile

### 7.2.1 Displaying the Tool Tip

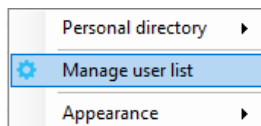
Hovering the mouse over a red, yellow or grey icon will reveal more information about the user's current state, if available. For engaged users this will include the name or number of the party they are engaged to and the duration off the current call as below [this feature can be disabled for privacy reasons].



## 7.3 Selecting the Contacts Panel Default List

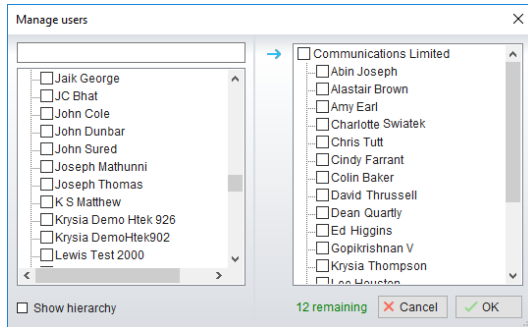
Unity Reception will display up to 50 internal users and an unlimited number of external users in a default list, which is always displayed when search criteria is not entered.

As outlined in section 7.6, Unity Reception can be configured to automatically select users to include in the default list, by periodically examining how often each user is searched on. This ensures the default list is always the most relevant thereby lessening the number of searches required. However, the default list can also be manually set in which case it will not be periodically updated based on search results. To manually set the default list right-click anywhere in the contacts list and select "Manage user list".

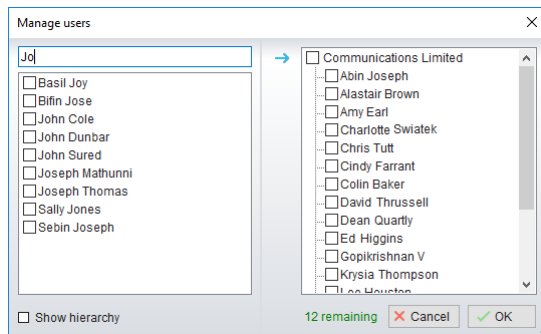


You will then be able to move users or departments between lists by checking the relevant box[es] then clicking the arrow button. All users in the right-side list will be monitored in the default contacts list. This list can be updated at any time and is saved between Unity sessions.



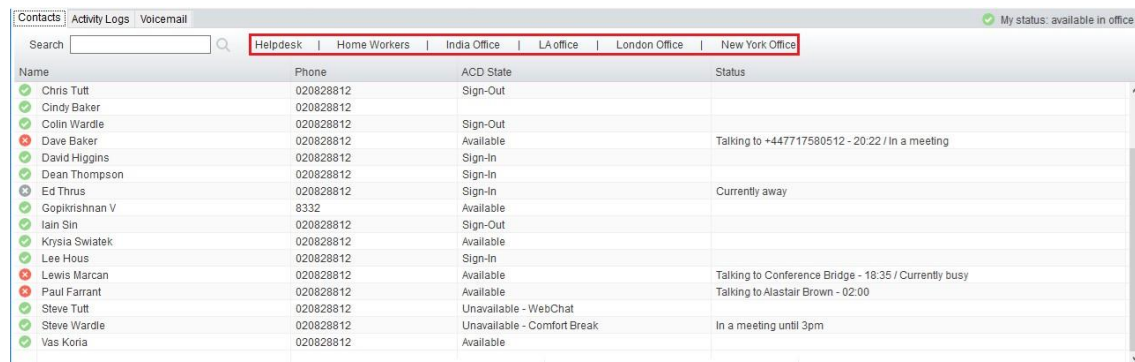


Tick the “Show hierarchy” box to include group and/or departments in the lists, when one of these entries is checked all child entries will also be checked. You can also easily search for available users using the search facility.



## 7.4 Contact Groups

Contact groups are pre-defined logical groups of internal and external contacts that allow the user to quickly load selected contacts, they are very similar to the default user list expect they are pinned to the Contacts tab, as shown below.



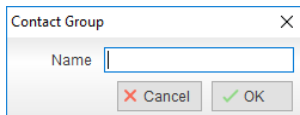
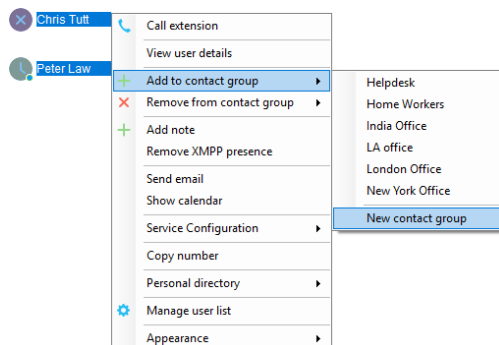
Contact groups provide multiple real-time BLF instances for efficient call handling. The contact groups can be named intuitively by the Reception user, for example, “Denver Office” or “Sales Team” as appropriate. Up to 12 contact groups can be added and each contact group allows up

to 50 internal users and unlimited external contacts. Internal users can belong to multiple contact groups.

Section 7.6.6 outlines how to enable contact groups, which are displayed in the same place as the alphabet shortcut letters meaning if contact groups are enabled the shortcut letters will be hidden.

#### 7.4.1 Creating a Contact Group

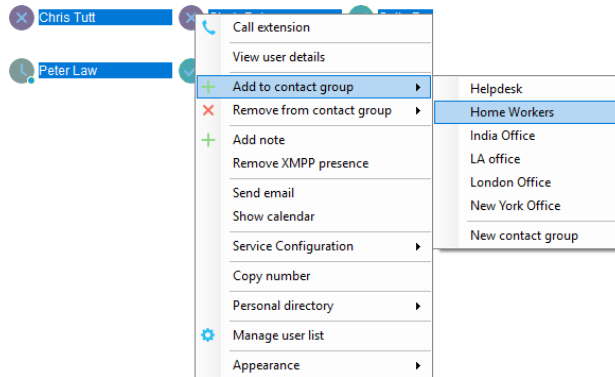
Assuming contact groups are enabled in Settings, drag over a group of monitored users in the Contacts panel, or CTRL + left click them in Contacts or Search and then right click the mouse and select “Add to contact group > New contact group”, as shown below.



From the dialogue box name the group and click OK.

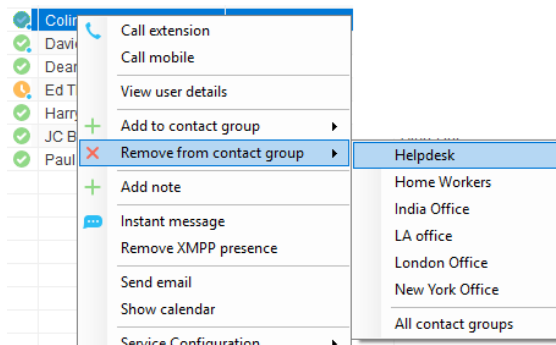
#### 7.4.2 Adding Users to an Existing Contact Group

After selecting additional internal users or external contacts right-click to add them to an existing contact group, as shown below. If a user or contact already exists in the contact group, they will not be duplicated.



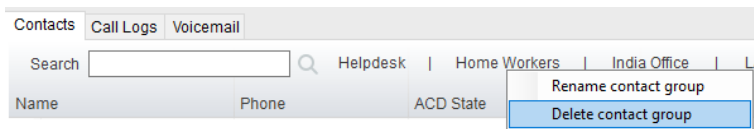
### 7.4.3 Removing Users from Contact Groups

Right click a user and select Remove from contact group.



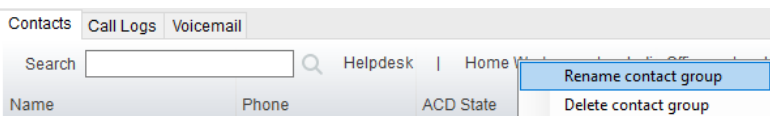
### 7.4.4 Deleting Contact Groups

Right click a Contact group name to delete it.



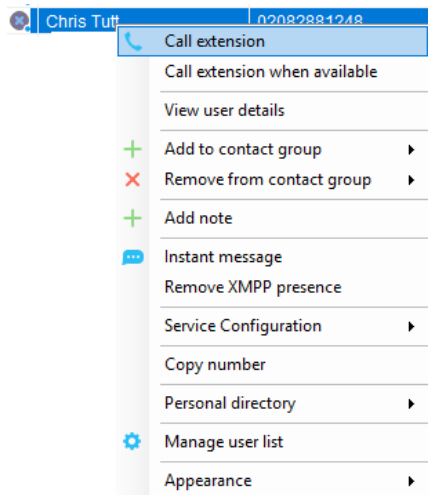
### 7.4.5 Renaming Contact Groups

Right click a contact group name and select "Rename contact group", then enter the new name and click OK.



## 7.5 Performing Call Control Actions in the Contacts Panel

There are many call control functions that can be performed by right-clicking a monitored user or external contact in the main Contacts panel. The menu options displayed will dynamically change to only show those available depending on the state of the user/contact as well as the state of the selected call in the Active Call Window [if there is one]. For example, “Transfer to voicemail” will not be available if the user does not have the voicemail service assigned and “Camp call on extension” will not be available unless there is a call selected in the Active Call Window and the monitored user is currently on the phone.



### 7.5.1 Call Extension

Selecting “Call extension” will initiate a new call to that user in the same way that double clicking the user icon would. Any current call will automatically be placed on hold. This can be used to make an announced transfer as opposed to a blind transfer using the “Transfer call” menu options.

### 7.5.2 Answer This Call [Call Pick-Up]

This feature is only available if either the Directed Call Pickup service is assigned to the receptionist, or the receptionist is in the same call pickup group as the monitored user. Please confirm with your service provider that these requirements are satisfied. When selected from the context menu, Unity will pull the ringing call to the receptionist. Only calls that are currently ringing can be answered by the receptionist.

### 7.5.3 Park Call on Extension

Unity will park the call selected in the Active Call Window onto the monitored user's extension. The selected call cannot currently be parked or camped on another extension. If configured, the call will stay in the Active Call Window with a state of "Parked", as shown below.

From	To	Duration	Status	Notes
2 Barry Simpson	Chris Tutt	00:18	Call parked for Andrew Smith	Previously transferred to Andrew Smith

### 7.5.4 Camp Call on Extension

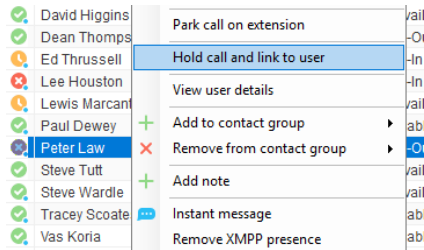
Unity will camp the call selected in the Active Call Window onto the engaged monitored user's extension. When the user goes back on-hook the camped call will be delivered and their phone will start ringing. If the user does not go back on-hook before the camp timer expires the call will return to the receptionist. This call can also be kept in the Active Call Window [the same as parked calls, above] if configured in Settings.

Camping calls is a feature of the Call Transfer service so is only available if assigned and configured to allow calls to be camped.

### 7.5.5 Hold Call and Link to User

This is a unique feature to Unity that allows the receptionist to link a call in the Active Call Window with an internal contact in the Contacts list. This feature is designed to give the receptionist visibility of who the caller is holding for and also their current hook status without having to check manually, because the call remains in the Active Call Window. This is an essential feature for busy telephonist stations that manage a large number of calls and often have several callers on hold simultaneously. When the linked user goes back on hook, Unity can indicate availability, automatically transfer the call or prompt to transfer the call. This is configured in Settings, as outlined in section 5.6.6.

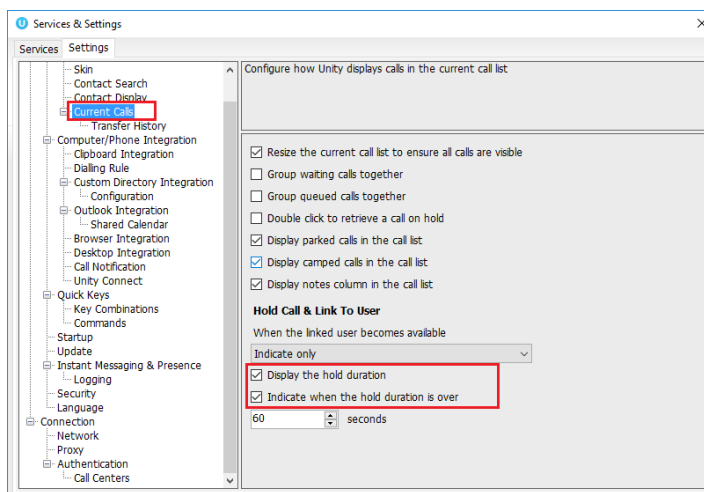
To hold and link a call to a monitored user, first ensure the call is selected in the Active Call Window [if multiple calls are present] and right click the monitored user in the Contacts list, as shown below. Please note that this feature is only available when the monitored user is currently on the phone.



The call is now placed on hold and the receptionist user can continue taking other calls. The Notes field displays “Waiting for Andrew Smith” in red to indicate that he is still on the phone.

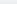
11	Natalie Maines (Salesforce Contact)	Jenna Wimshurst	02:19 (00:17)	On hold	Waiting for Peter Law
----	-------------------------------------	-----------------	---------------	---------	-----------------------

The Duration field will display the total time the call has been on hold for the user. This can be configured to have a threshold set against it, as shown below.

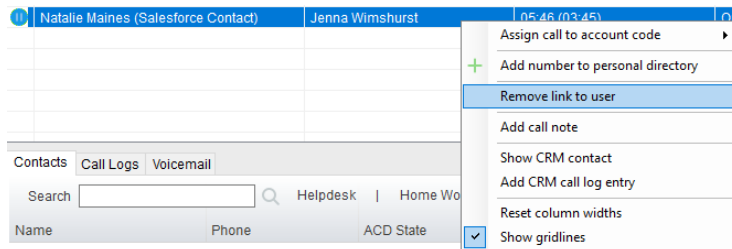


From	To	Duration	Status	Notes
11 Natalie Maines (Salesforce Contact)	Jenna Wimshurst	03:28 (01:26)	On hold	Waiting for Peter Law

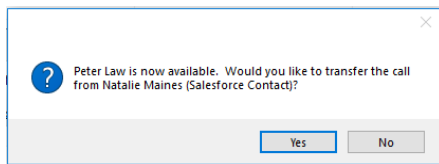
When Paul Dewey becomes available the Notes field changes to green to alert the receptionist that the monitored user is available to take the call, as below.

From	To	Duration	Status	Notes
 Natalie Maines (Salesforce Contact)	Jenna Wimshurst	08:06 (06:05)	On hold	Waiting for Peter Law

The user can now transfer the call either by dragging it over the monitored user, or by right-clicking and selecting “Transfer call to extension”, as below. The call can also be un-linked from the monitored user by right-clicking and select “Remove link to user”.



Unity can be configured to automatically blind transfer the call when the linked user becomes available, or to prompt the receptionist to blind transfer the call, as shown here.



Once the call is transferred it will be removed from the Active Call Window. These options are set in Settings as outlined in section 5.6.6.

### 7.5.6 Call Mobile

When selected Unity will hold any active calls and dial the mobile number of the monitored user, which is added to the user profile in Broadworks.

### 7.5.7 Transfer Call to Mobile

When selected Unity will transfer the currently selected call in the Active Call Window [if multiple calls are present] to the mobile number of the selected monitored user. This menu option is only included when there is a call in the Active Call Window.

### 7.5.8 Transfer Call to VoiceMail



If the monitored user has the Voice Messaging User service assigned and activated, then the receptionist can blind transfer a call directly to that user's voice mailbox. This menu option is only included when there is a call in the Active Call Window.


### 7.5.9 Barge into This Call

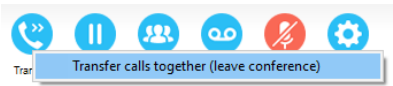
When selected Unity will make an immediate three-way conference call with the receptionist, the monitored user and the third party the monitored user is talking to. All parties will be able to talk and hear each other. When attempting to barge into a call, if the phone plays a "number doesn't exist" tone then this means the monitored user cannot be barged into, normally because they

have the Barge-In Exempt service assigned and activated. Only users without this service active can be barged into.

The Active Call Window will display like a normal conference call, as below, and the receptionist can hold/retrieve the same as for a conference call.

From	To	Duration	Status
 Sasha Gorb	Jenna Wimshurst	00:15	Active (conference)/Not recording
 Jenna Wimshurst	01268508018	00:02	Active (conference)/Not recording

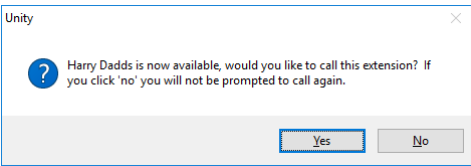
Please note that when leaving a call that has been barged into, you must transfer the call parties together in order to leave the conference without ending the original call. To do this press the Transfer button  and select “Transfer these calls together”, as shown below.



Please note this feature depends on the Directed Call Pickup with Barge-In user service being assigned to the receptionist.

7.5.10 Call Extension When Available

When selected Unity will place an alert on the engaged monitored user, so that when they become available a dialog box will prompt the receptionist to call.



7.5.11 View User Details

View details as entered in the profile for this user in the VoIP platform. This includes their title, phone number, mobile and email address. Click on the email address to send an email using the default email program.



Steve Wardle

Title:


Email: [steve.wardle@kakaposystems.co](mailto:steve.wardle@kakaposystems.co)

Phone: 02082881245

Mobile:

WAV File:

OK

You can also configure Unity to play a WAV file whenever that user's phone is ringing, which is useful in an assistant environment scenario where the receptionist is screening calls. Click the Save button  to select the WAV file to play. When the audio alert plays that is the reminder for the receptionist to pick-up the call.

### 7.5.12 Add Note

The receptionist can add notes for an internal user which are shared between Unity Reception users. They provide more information about the monitored user over the hook status, service configuration and other presence settings. Notes are displayed in the detail list or as tooltips.

Name	Phone	ACD State	Status
Alastair Brown	02082881268	Available	
Amy Earl	02082881249	Available	Talking to Iain Sin- 00:02
Chris Tutt	02082881248	Unavailable - Lunch	On leave until Monday, call Steve instead

Chris Tutt  
On leave until Monday, call Steve instead

Right click the user again to edit or remove the note.

- Call extension
- View user details
- + Add to contact group
- Remove from contact group
- Edit note
- + Remove note


### 7.5.13 Send Email

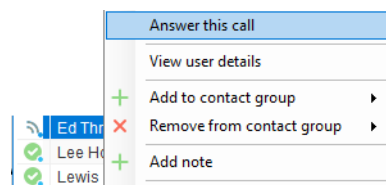
If the email address has been entered in the profile for the user, Unity will use the default mail application to send an email.

## 7.5.14 Show Calendar

As discussed in detail in section 9, Unity will display any meetings for the monitored user that are available through the shared calendar in Microsoft Outlook. This option will only be displayed if the email address for the monitored user is present in their VoIP profile.

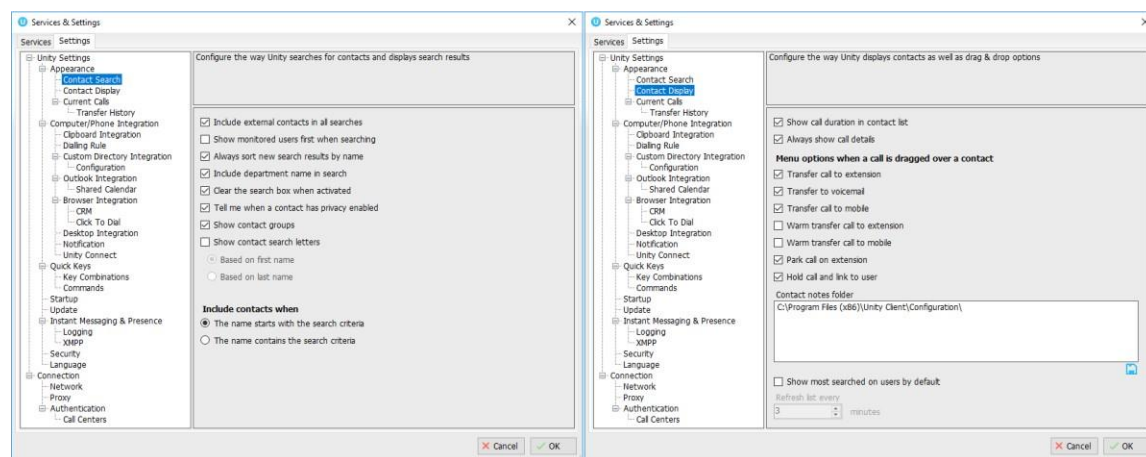
## 7.5.15 Answer This Call [Call Pick-Up]

When a monitored user's phone is ringing their icon in the Contacts list becomes orange . To perform pick-up and answer the call on behalf of the monitored user, right click the icon and select "Answer this call". This option is only displayed when right clicking a ringing user, and if the receptionist and the monitored user belong to the same call pickup group, or the receptionist has the Directed Call Pickup with Barge-In service assigned.



## 7.6 Configuration

The contacts panel is configured in Settings, as shown below. One panel manages how search results are displayed while the other manages the general behaviour of the Contact list.



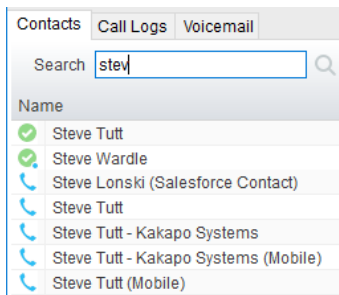
### 7.6.1 Include External Contacts in all Searches

When checked Unity will always search all directories every time a search is performed, which is one second after the last key was pressed. If the user is a slow typist this could result in many searches, so if there is a large external directory [for example an Outlook folder with several

thousand records or a slow-performing SQL database] then Unity performance may be impacted. Turning this setting off means that by default only the group/enterprise directory is searched, other directories will only be searched if the user presses enter or clicks the search image.

### 7.6.2 Show Monitored Users First When Searching

When this setting is turned on Unity will always display monitored users first in alphabetical order, then external contact is monitored order. Otherwise internal and external contacts will be shown in alphabetical order, as below.



### 7.6.3 Always Sort New Search Results by Name

This setting can only be modified if the “Show Monitored Users First When Searching” setting is not active. If active then search results will always be displayed in alphabetical order based on the name of the contact, otherwise the same sorting used in the default list [which could be based on any column in the Contacts list] will be used when searching.

### 7.6.4 Include Department Name in Search

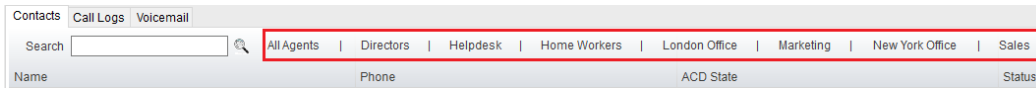
If activated then Unity will include any internal users where the department name matches the search criteria, for example the receptionist could type “sales” to quickly see a list of all sales people. In a nested department environment only the bottom-most department will be considered.

### 7.6.5 Clear the Search Box When Activated

If activated, then whenever the user clicks into the search box the current search criteria will be removed and the default list will be shown.

### 7.6.6 Show Contact Groups

Contact groups provide a fast way to access pre-configured groups of internal and external contacts.



### 7.6.7 Including Contacts in Search Results

When searching Unity can be configured to only include contacts in the search results if the name starts with the search criteria or contains the search criteria. When configured to search based on the contact name *containing* the search criteria, it will be possible to search on first or last name, but the search results will be less refined (there will often be more entries in the search results).

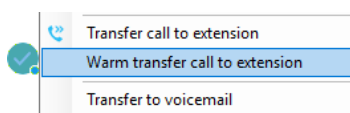
### 7.6.8 Show Call Duration

Unity can be configured to include the call duration when showing a monitored user on the phone. The default option is to show the call duration; this would likely only be deactivated for privacy reasons.

### 7.6.9 Menu Options on Drag & Drop

As outlined in section 7.6, when a call is dragged over an internal user in the Contact list [which may be displaying either the default contact list or search results] Unity can be configured to dynamically display available call actions, based on the state of the call and the status of the internal user that the call was dropped onto. For example, if the monitored user doesn't have voicemail available then the option to transfer to voicemail would not be displayed, similarly if the monitored user isn't on the phone then the Hold & Link option would not be available. At least one option must be selected from those available, if only one option is selected then that action will always be performed when a call is dragged over a monitored user, assuming the option is available at the time.

If a call is dropped over an external contact then the only options available are to blind transfer the call or perform a warm transfer [which will call the external contact that the call was dropped onto, as outlined in section 7.6].

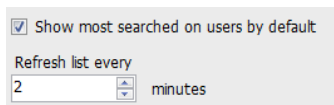


### 7.6.10 Contact Notes Folder

If multiple receptionists are working together then setting a common location for contact notes means that even if a receptionist is away from the office, when they next start Unity they will have the most recent notes about users in the Contact List.

### 7.6.11 Show Most Searched Contacts

Unity can be configured to dynamically load the default contact list based on the 50 most searched on users, this list is periodically refreshed to ensure it is always most relevant and is saved between Unity sessions.



## 8 INSTANT MESSAGING

Instant messaging is available in all Unity clients and uses dynamic registration, meaning buddy lists are not required – users can instant message each other as soon as they start Unity. Instant messages can be sent both to online and offline users, offline meaning that user doesn't currently have a Unity client open. If an instant message is sent to an offline user it will be delivered when that user next starts their Unity client.

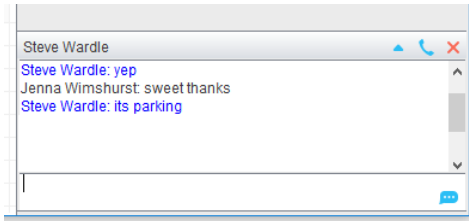
### 8.1 Online/Offline Indicator

An "online" user is one that is currently running an instance of Unity, and therefore available to send an online message to. These users are indicated with a small envelope on their user icon. This applies to the user regardless of the current state, as illustrated below.

State	Online [Unity Open]	Offline [Unity Closed]
Available		
Ringing		
Engaged		
DND/unavailable profile		

## 8.2 Docking the IM Conversation

Instant messages can be displayed in the docked IM panel or as separate windows for each individual IM conversation. If the docked window is used new conversations can be initiated via drag and drop and new IM windows will not pop over other applications.

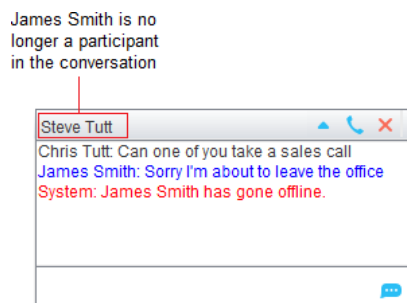


Configuration options for instant messaging - including the docked IM panel, are outlined in section 8.10.

## 8.3 IM Conversation Overview

In both docked and undocked IM conversation panels the upper part of the IM message log will automatically scroll to display the most recent message. Outgoing messages are in black while incoming messages [from other users] are in blue. Whenever a new conversation is started Unity will automatically load any messages from previous conversations with the participant, these messages are not stored between Unity sessions however messages are logged locally, as outlined in section 8.9.10. Type your message in the bottom window and press enter or click the envelope image to send the message.

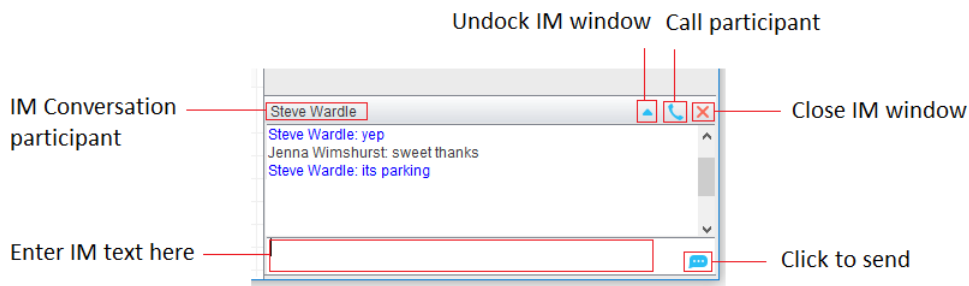
If a user was online when the conversation started by then closes Unity, the IM conversation window will automatically add an entry to notify the user, as shown here.



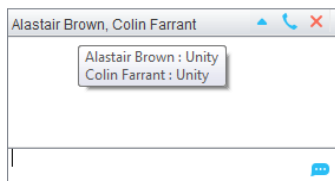
If there is only a single participant in the conversation then if Unity is configured to send instant messages to offline users [as outlined in section 8.10.1] then the participant will be shown as offline in the conversation, but messages can still be sent which will be received when the user

next opens Unity. If Unity is not allowed to send messages to offline users then the participants list will be cleared and Unity will not allow new messages to be added to the conversation. Please note this logic applies to both docked and undocked IM conversations.

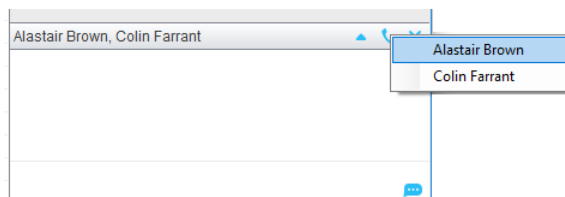
### 8.3.1 Docked IM Conversation



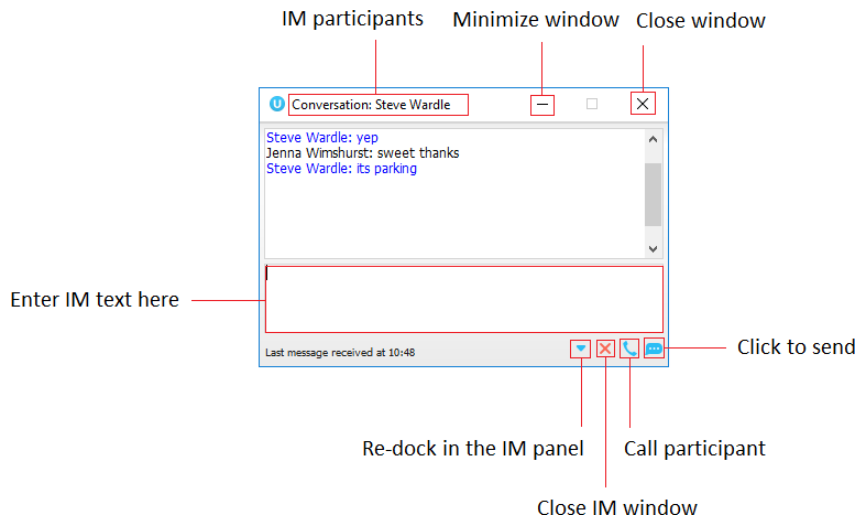
You can see all participants in the conversation in the title bar, and can hover the mouse over to see a complete list which includes if the user is using Unity IM or XMPP, as outlined in section 8.9. Group chat is discussed in section 8.5.



When there are multiple participants in the conversation you must select which user to call from the drop-down menu. Instant conference with all parties is not available.



### 8.3.2 Undocked IM Conversation



Because this is a separate window it can be minimized, maximized or closed independently to Unity. If a docked IM conversation is closed then when a message is received for the same conversation, the previous message log will be reloaded in the new undocked conversation.

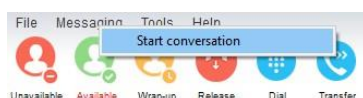
### 8.4 Docking & Undocking IM Conversations

Depending on how Unity is configured, all new IM conversations will begin docked or undocked. You can undock a conversation by clicking the ▲ button. The conversation will be moved to a standalone window. Dock a conversation by clicking the ▼ button, the window will automatically be closed and the conversation added to the docked IM panel.

### 8.5 Starting an Instant Message Conversation

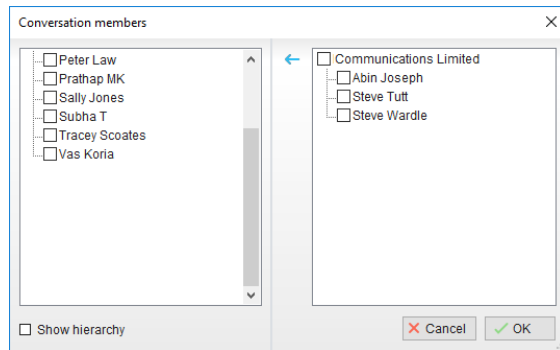
New IM conversations to a single user are easily created by right-clicking the user in the Contacts list and selecting "Instant message" from the menu. If the docked IM panel is displayed then you can also drag the user over the panel to start a new conversation.

To start a new IM conversation with one or more participants, click Message > Start conversation from the main Unity window, as shown below.





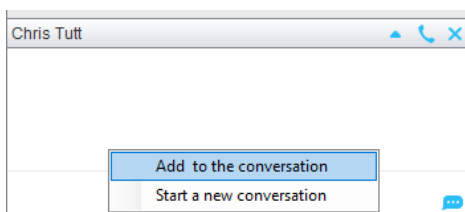
Unity will show a list of all users that are currently online, select which users to include in the conversation by moving them into the list on the right-hand side, similar to when selecting monitored users as described in section 7.3.




Click OK to setup the new conversation with all participants included in the list, there is no limit to the number of users that can be added to a conversation. When any participant sends a message all other participants will receive it as a broadcast. Conversations with multiple participants are often referred to as “group chat”, please note that all users must be online in order to participate in a group chat. When a participant becomes offline Unity will update the conversation by alerting the user and removing that participant from the list.

## 8.6 Adding Participants to an Existing Conversation

To add an online participant to an existing conversation simply drag the user over the conversation and select “Add to the conversation” from the context menu that appears.



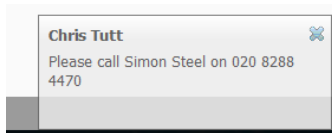
When the IM conversation is undocked you click the  button to add and remove participants, which uses the same window as adding users to a new conversation, as described in section 8.5.

## 8.7 Sending Contact Directory Numbers

Personal directory entries (as outlined in section 11) can easily be shared with all participants in a conversation by right-clicking the box where messages are sent, and selecting the directory entry from the context menu.

## 8.8 Notifications

Unity can be configured to show a “toast” notification when a new instant message is received, as shown here. Clicking on the text will pop Unity and ensure that conversation is visible in the docked conversation panel.



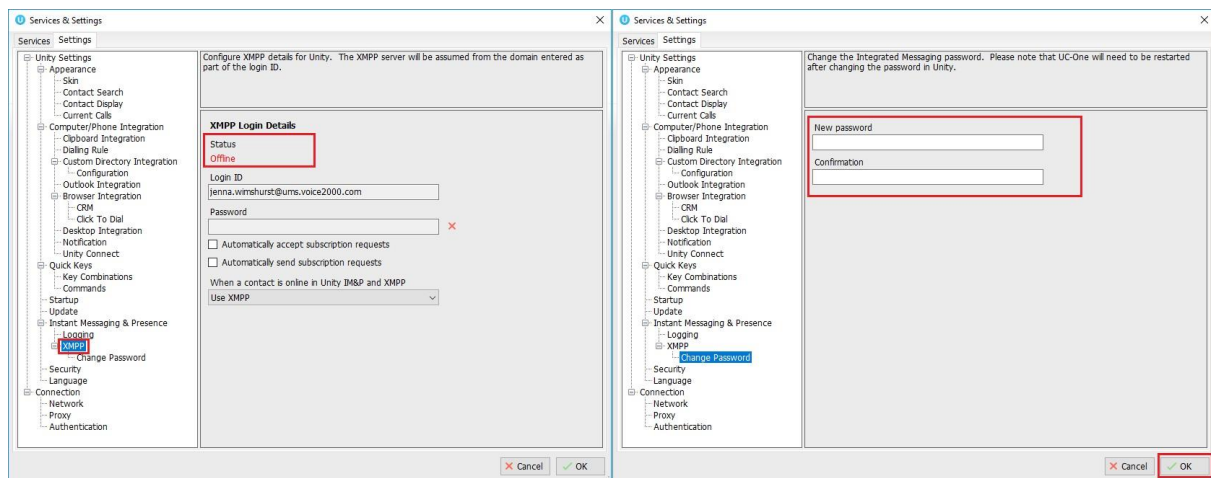
## 8.9 XMPP Integration

Unity provides seamless integration with XMPP in order for Unity users to share instant messaging and presence (IM&P) functionality with UC-One clients. All instant messages are displayed and managed to the user as a docked or undocked IM conversation, regardless of the IM&P platform being used. Only online users in Unity can participate in group chats, group chat is not currently supported with XMPP.

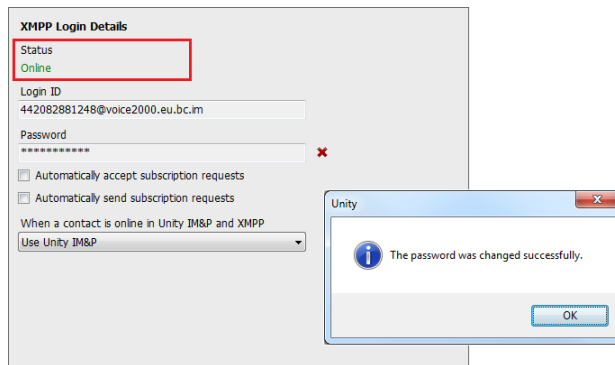
### 8.9.1 XMPP Authentication

Unity is unable to extract the XMPP password from the VoIP platform, meaning it must be reset from within Unity. This functionality relies on the Integrated IM&P service being assigned to the Receptionist, although no other UC-One related service need be assigned.

In order to set the XMPP password go into Settings and click on the “XMPP > Change Password” item as shown below. You can see the current XMPP status is offline.



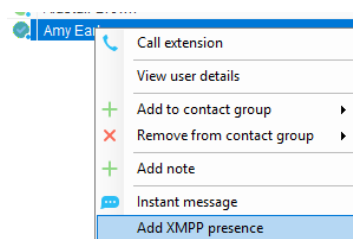
Once the password has been entered you must click the OK button to save the password, before moving to any other panels in settings. Please note that the XMPP password should not be the same as the password used to first log into Unity. You will be notified once the password has been changed and the XMPP status changed to online, as shown below.



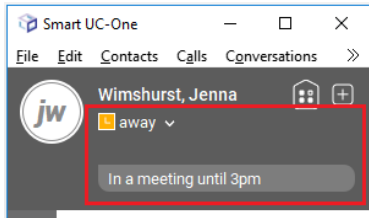
Unity can be configured to automatically generate an XMPP password the first time it is loaded, this is a branding property that is set in the Unity Client branding portal. In this case Unity will save the randomly generated password in Broadworks and also in the registry, from where it will be used whenever Unity is next started. When the password is reset in Broadworks it will automatically be updated in the device configuration file for UC-One, if in use. Furthermore, if UC-One is currently in use this will not impact the existing XMPP registration, therefore there is no impact on UC-One.

### 8.9.2 Managing XMPP Subscriptions

To subscribe to XMPP presence for a monitored user (meaning the receptionist will receive real-time updates as the monitored user changes their presence in UC-One) simply right-click the user and select “Add XMPP presence”, as shown here. If already subscribed, then right-click the user to remove XMPP presence.



Unity will show the unavailable, busy etc status of the user, as well as any status message manually entered in UC-One, as illustrated below.

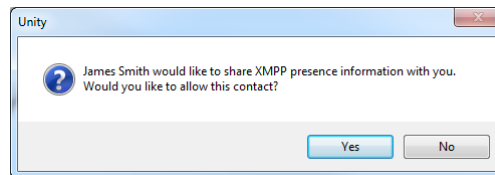
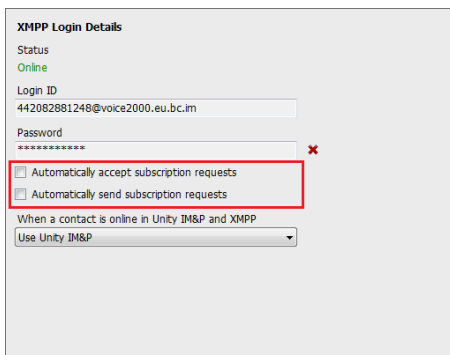


✓	Steve Tutt	02082881251	
✗	Steve Wardle	02082881245	In a meeting until 3pm / Currently away

Please note that at present XMPP is only used by Unity to communicate with UC-One clients.

Unity can be configured to automatically subscribe to all monitored user's XMPP presence, as shown here. However, this may result in the buddy/contact list in UC-One becoming very large so should only be activated if the Receptionist doesn't often refer to the buddy list.

Unity can also be configured to automatically accept subscription requests from other users, if this setting is not activated then whenever a user subscribes to the Receptionist's XMPP presence a prompt will be displayed, as below.

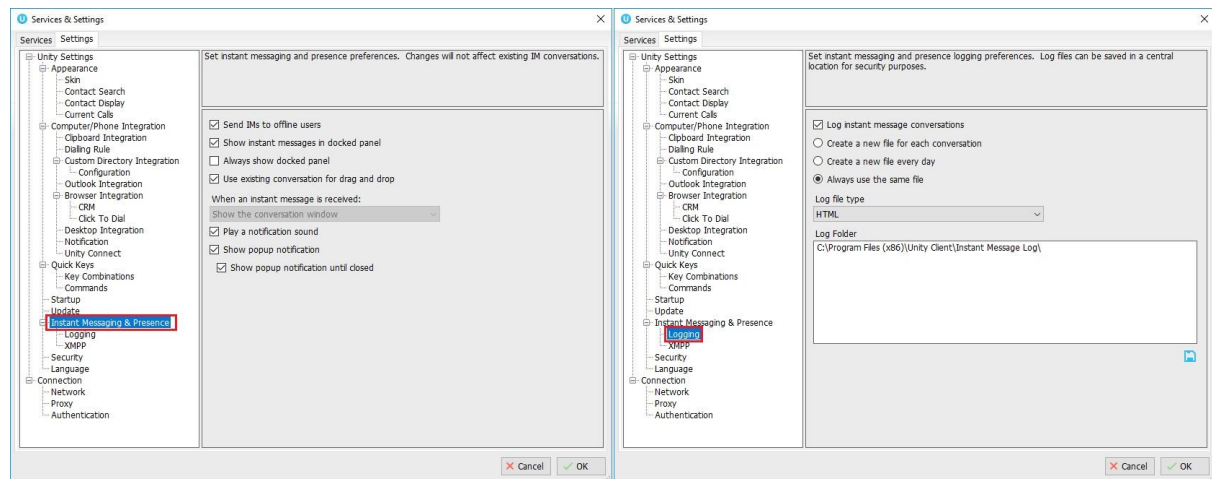


### 8.9.3 Instant Message Priority

Because a monitored user could be running Unity and UC-One, that user could be available to receive instant messages using either client, or both. In these situations, Unity can be configured to prioritise one IM platform over the other, as shown below.

Options are to only send the instant message using only Unity IM&P meaning the instant message will not be received by UC-One, to only send using XMPP meaning the monitored user's Unity client will not receive the message, or to send through both messaging protocols meaning both clients will receive any instant messages sent from Unity. The last option is the default and is recommended in most scenarios.

## 8.10 Configuration



### 8.10.1 Send IMs to Offline Users

As discussed in section 8.3, Unity can be configured to send IMs to offline users which are then delivered when the recipient's Unity is next started. This is the default behaviour but can be turned off depending on company policy.

### 8.10.2 Show Instant Messages in Docked Panel

This setting instructs Unity whether IM conversations should be docked or undocked by default, as discussed in section 8.3.1 & 8.3.2.

### 8.10.3 Always Show Docked Panel

This setting can only be changed if IM conversations are docked by default. The docked IM panel can be configured to only appear when there is an instant message conversation, or to always be displayed. The advantage of the latter is that drag & drop will always be available to quickly start a new IM conversation, which may be preferred in a receptionist environment.

### 8.10.4 Use Existing Conversation for Drag & Drop

This setting can only be changed if IM conversations are docked by default. When a monitored user is dragged into the docked IM panel, if there is an existing conversation for that user in the panel then Unity will ensure it is visible and prompt the user to continue the existing conversation, rather than starting a new one.

### 8.10.5 When an Instant Message is Received

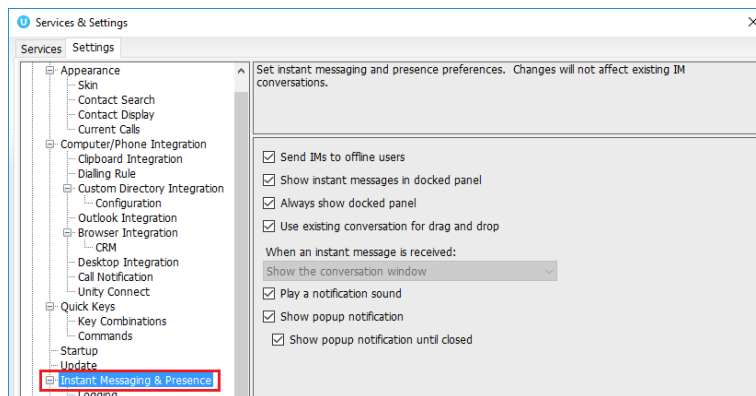
This setting can only be changed if IM conversations are undocked by default. When a new instant message is received Unity can be configured to show the IM conversation window on top of all windows [and keep it on top], to pop over the top of windows but allow other windows to be placed over it, or to show the conversation window minimized.

### 8.10.6 Play a Notification Sound

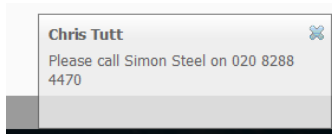
Unity can be configured to play an audio announcement when an instant message is received and Unity is not the active application on the desktop.

### 8.10.7 Show Popup Notification

As outlined in section 8.8, Unity can be configured to display a “toast” notification to appear when an instant message is received and Unity is not the active application on the desktop.



Under Instant Messaging & Presence – select the ‘Show popup notification until closed’ to keep the IM popup on the screen until it has been closed or clicked.



#### 8.10.8 Log Instant Message Conversations

By default Unity logs all instant message conversations locally, although this may need to be disabled for privacy reasons.

#### 8.10.9 Log Frequency & Type

By default a single file is used to record all messages for all conversations, but this can be changed to create a new log file per day or even per conversation. Messages can be stored as an HTML document as shown below, or a CSV file.


Unity Instant Message Log				
Date	Time	From	To	Message (most recent messages will appear at the end of the list)
18/04/2016	09:46 AM	Chris Tutt	Charlotte Quartly	Hi can you take a call for marketing?
18/04/2016	09:46 AM	Charlotte Quartly		of course, send it though
18/04/2016	09:46 AM	Chris Tutt	Charlotte Quartly	thanks
18/04/2016	09:46 AM	Chris Tutt	Lewis Marcantonio	There is someone at the front desk to see you
18/04/2016	09:47 AM	Lewis Marcantonio		Ok I'll be right there
18/04/2016	09:47 AM	Chris Tutt	Andrew Smith (Offline)	Please call Sarah Parkson when you can, she said you would know what it was about
18/04/2016	11:56 AM	System	Chris Tutt	Charlotte Quartly has gone offline.
18/04/2016	12:01 PM	Chris Tutt	James Smith	Can you please take a sales call
18/04/2016	12:01 PM	James Smith		Sorry, I'm just about to leave the office
18/04/2016	12:02 PM	James Smith		I think Sally is free
18/04/2016	12:31 PM	Chris Tutt	James Smith, Steve Tutt	Can one of you take a sales call
18/04/2016	12:32 PM	James Smith	Steve Tutt	Sorry I'm about to leave the office
18/04/2016	12:32 PM	System	Chris Tutt	James Smith has gone offline.
18/04/2016	12:40 PM	Chris Tutt	James Smith	Can you please take a sales call
18/04/2016	12:40 PM	James Smith		Sorry, I'm just about to leave the office
18/04/2016	12:40 PM	James Smith		I think Sally is free
18/04/2016	01:17 PM	James Smith		Do you have the number for Gibson Lane? I can't find it
18/04/2016	01:18 PM	Chris Tutt	James Smith	020854654

#### 8.10.10 Log Folder

This specifies the directory that instant message logs are stored in, this would often be set to a central repository (for example a network share on a server) for centralized control and access.

## 9 SHOW CALENDAR

Unity Reception integrates with the shared calendar in Microsoft Outlook to display appointments for the selected monitored user, as shown below. Right click the monitored user and select “Show calendar” to see the below popup.

Name	Phone	Status
 Amy Farrant	02082881246	
	Today	Tomorrow
09:00-10:00		Update LH entrance message for all IVR
10:00-11:00		rebuild packages
11:00-12:00		
12:00-13:00		
13:00-14:00		
14:00-15:00		
15:00-16:00		
16:00-17:00		
17:00-18:00		appointment
18:00-19:00		

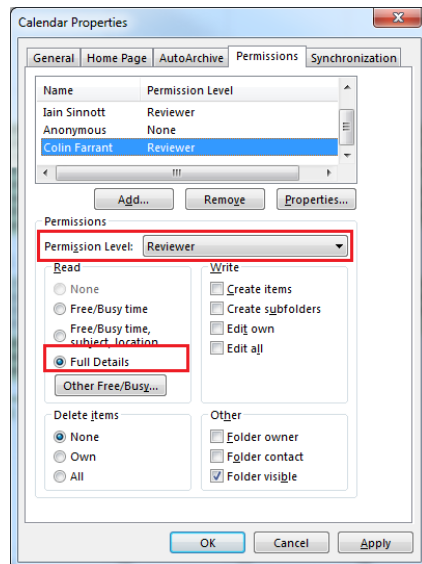
You can see in the above sample that the monitored user is free today but has two all-day appointments/tasks tomorrow and another from 5:00-5:30 pm.

If Unity is unable to load the calendar for a monitored user this popup will be shown. This indicates that an error occurred while loading the calendar, most likely because it is not shared with the receptionist or permissions are inadequate.

	Today	Tomorrow
09:00-10:00		
10:00-11:00		
11:00-12:00		
12:00-13:00		
13:00-14:00		
14:00-15:00		
15:00-16:00		
16:00-17:00		
17:00-18:00		
18:00-19:00		

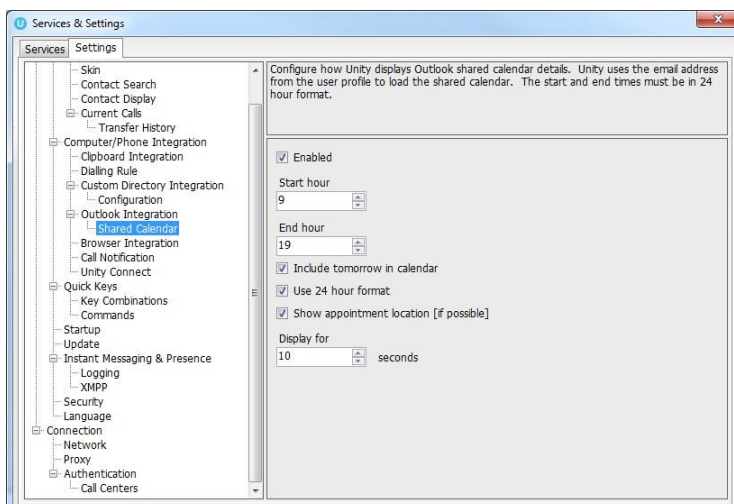
In order to display the calendar, Unity requires “full details” access to read the calendar, it is recommended that the Reviewer permission level be set for the receptionist to all calendars that Unity needs to display.





## 9.1 Configuration

Outside Outlook, options are available to change the way the calendar is displayed, from setting the hours that should be included in the calendar to setting how long it is displayed for.



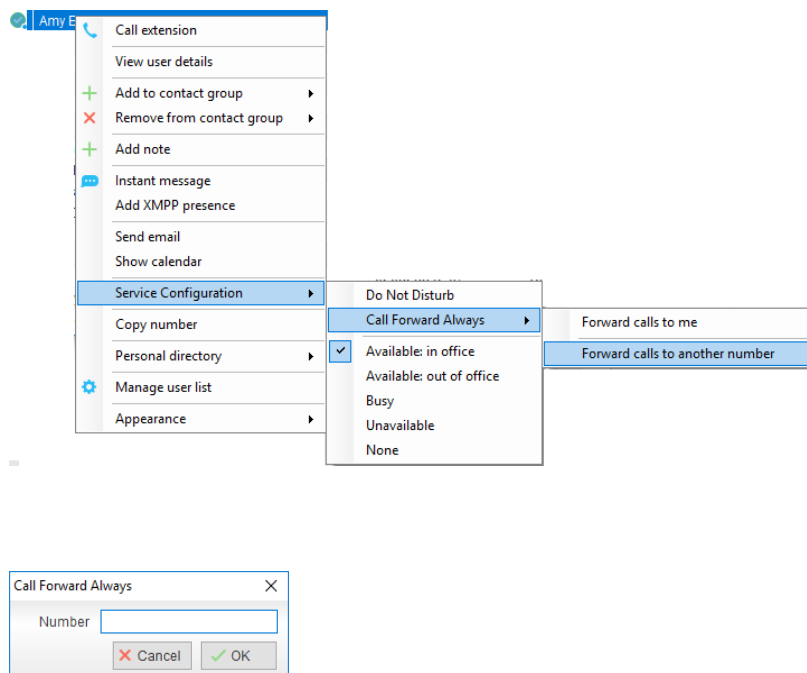
Please note this feature is only available through Microsoft Outlook and only if the email address of the monitored user is present in the VoIP profile.

## 10 REMOTE SERVICE CONFIGURATION

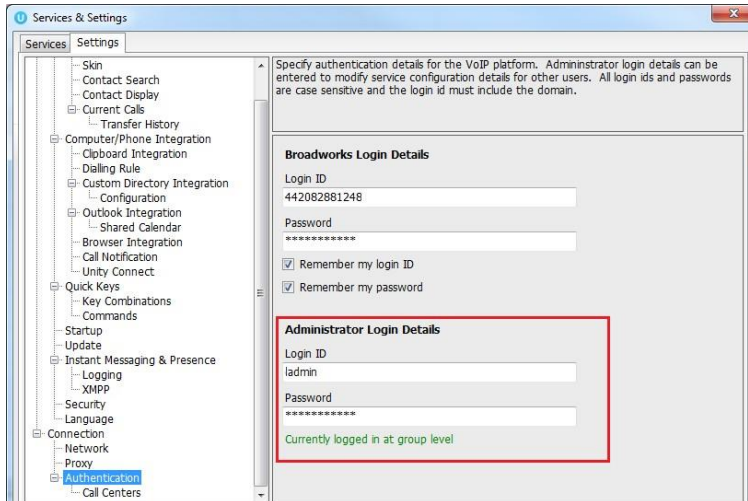
Unity Reception allows the user to change the service configuration for monitored users, for example to activate Do Not Disturb or to forward all calls to a specified number. The services that can be configured are:

Service	Configuration Option
Do Not Disturb (DND)	Activation and deactivation only
Call Forward Always (CFA)	Activate to forward all calls to the monitored user's mobile phone (if present in the user profile), the receptionist's phone or a specified number. The service can also be deactivated.
CommPilot Express (CPE)	Activate the "Available: In Office", "Available: Out of Office", "Busy", "Unavailable" profile for call routing and presence, or set to "None" to deactivate.


When right-clicking the monitored user, Unity will display the current activated state for each service, if assigned to the monitored user. In the below example we configure call forward always to a specified number.



This feature requires that either a group or enterprise level administrator account be entered into Unity, as shown below. Please restart Unity after entering the authentication details. If successfully logged in, Unity will indicate the level at which the administrator account resides. If the admin account resides at the group level but the receptionist is part of an enterprise, then remote service configuration will only be available for users in the same groups.

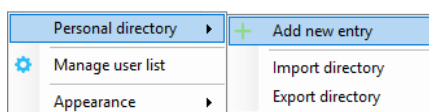


## 11 PERSONAL DIRECTORY

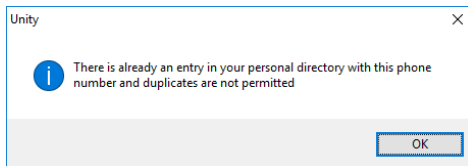
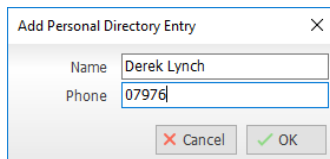
The Personal Directory is a repository on the VoIP platform for each individual user to store personal contacts, which are available to be added to the default contact list and are included when searching in the Contacts list. Personal directory entries are classed as external contacts, so are shown with a  image. Double clicking the item in the Contacts list will make a call to the associated number.

### 11.1 Add a Personal Directory Entry

To add an entry, right-click anywhere in the Contacts list and select “Add new entry”.

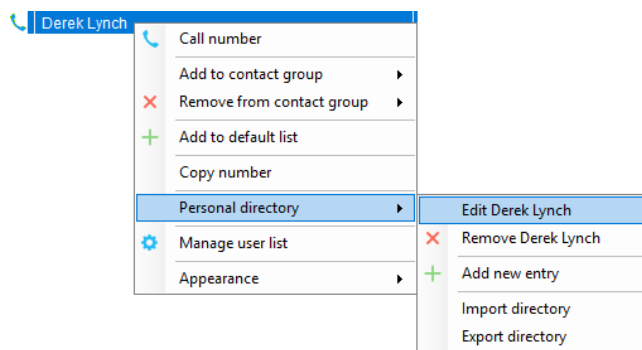


Then enter the name and number and click OK. If the number specified is already in the Directory the user will be alerted.



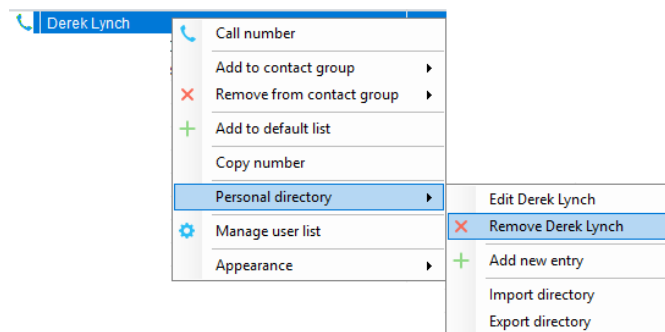
## 11.2 Edit a Personal Directory Entry

Search for the contact using either the name or number, then right-click and select the menu option to edit to contact, as shown below.

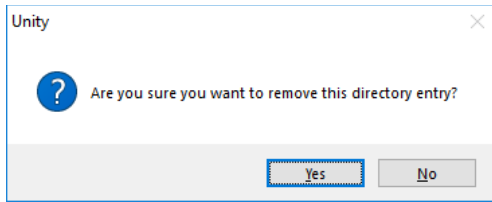


## 11.3 Remove a Personal Directory Entry

Search for the contact using either the name or number, then right-click and select the menu option to edit to contact, as shown below.

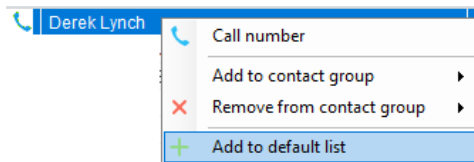


You will be prompted to confirm the action as below. Please note that once the contact has been removed it cannot be undone.



#### 11.4 Including External Contacts in the Default Contacts List

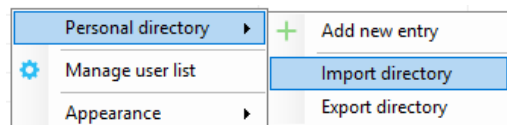
To “pin” a personal directory entry [or any other external contact] to the default Contacts list, right click and select “Add to default list”, as shown here.



Please note that external contacts that are pinned to the default Contacts list do not contribute to the limit of 50 monitored users.

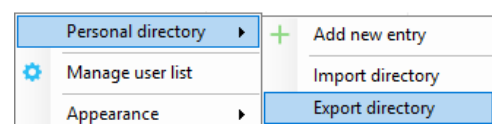
#### 11.5 Import Personal Directory

Unity allows multiple contacts to be imported into the personal directory through a .csv file, provided the file is in “name, number” format. Right click anywhere in the Contacts list and select the import menu option as shown below, then select the location of the file to import. Depending on the number of contacts this may take several minutes.



#### 11.6 Export Personal Directory

You can export the personal directory in case it needs to be imported for another user. To do this right click anywhere in the Contacts list and select the export menu option, as shown below. You will be prompted to specify the file location, the format is csv and the default file name is PersonalDirectory.csv



## 12 DIRECTORY INTEGRATION

---

Unity combines list of contacts from multiple locations to create a central search repository. This includes public and private directories from the VoIP platform, Outlook contacts from Outlook [if applicable] and any third-party data stores.

Please see your Administrator for a separate guide on using CRM integration.

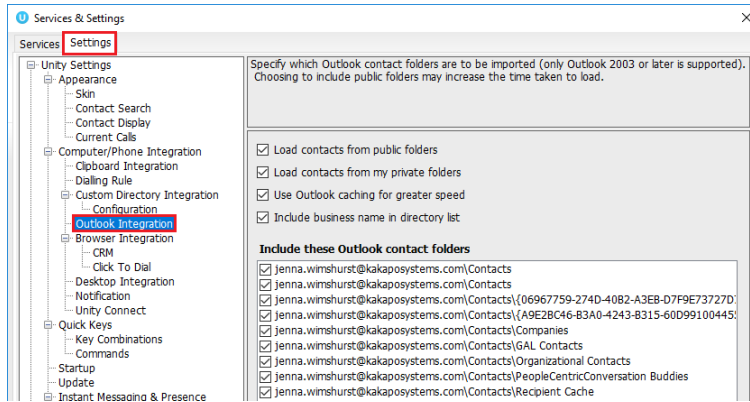
Directory Owner	Directory Type	Entry Type
<b>BroadSoft</b>	Group Directory	All other users for BLF presence as well as hunt groups and auto attendants
<b>BroadSoft</b>	Common Phone List	Speed dials entries at the Group level
<b>BroadSoft</b>	Personal Directory	The user's own personal speed dial entries
<b>Outlook</b>	Personal Contacts [private folder]	The user's own Outlook Contacts
<b>Outlook</b>	Group Contacts [public folder]	The shared Outlook Contacts at the Outlook group level
<b>Third Party</b>	SQL	External SQL Directory
<b>Third Party</b>	LDAP	External LDAP Directory

### 12.1 Loading Directories

Unity will load all directory entries from the different locations on start up, and will not reload directories during the same Unity session. This means if contacts are added to the VoIP platform or Outlook contacts list while Unity is running they will not be visible until Unity has restarted.

### 12.2 Configuring Outlook Contacts Preferences

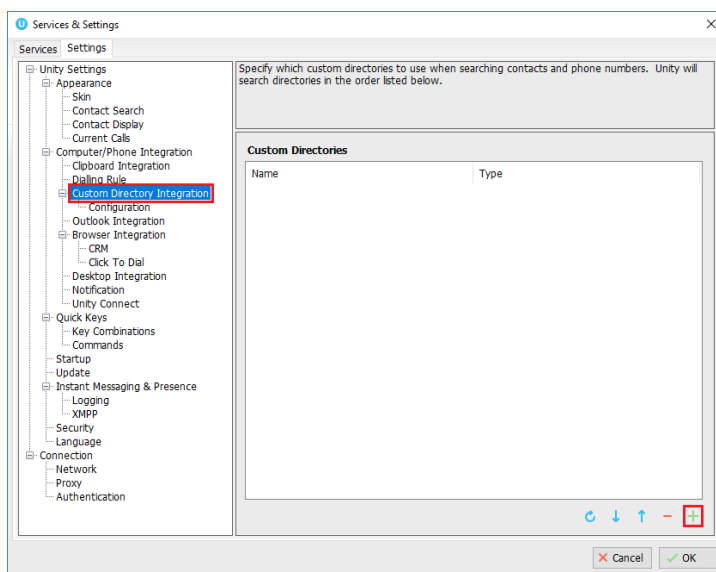
Outlook folders can be included or excluded through Settings, as shown below. Please note only Outlook folders where the default object is "Outlook Contact" will be available.



### 12.3 Third Party Directories

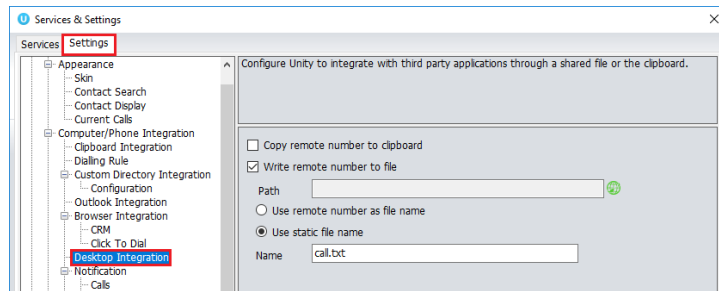
If configured, Unity will search any LDAP-compliant or SQL data stores using dynamic SQL statements or LDAP filters, rather than loading these directories on startup. This means that as contacts are added, modified deleted while Unity is running, the most recent information will always be displayed. In order to reduce the footprint on the data server and Unity, third party data sources are not included in searches unless the user presses the enter key or clicks the search button.

Unity includes a wizard to connect to third party SQL and LDAP-compliant directories, as shown below.



## 12.4 Desktop Integration

Go into Settings > Settings tab > Desktop Integration, as below.

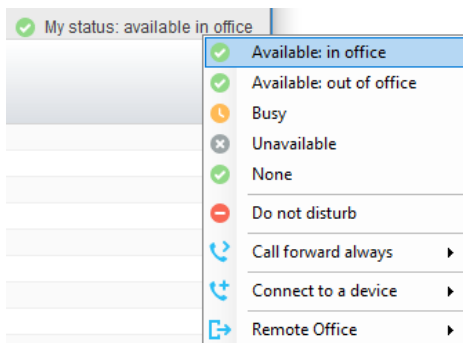


Unity must be configured with the folder location where the file is to be written, you can also specify whether to use the remote number as the filename (for example 02082881248.txt) or to include the remote number in a text file with whatever naming convention you require. Lastly you should instruct Unity when to create the file, for example only when receiving [call center] calls. Please note that Unity will only create the file for an inbound call when the user has answered it.

When you click OK to save, Unity will attempt to create a file called test.txt in the specified folder, then to delete it, which is to test that appropriate folder permissions have been applied. If this fails, Unity will alert the user and the settings will not be saved.

## 13 MY STATUS (QUICK ACCESS SERVICE CONFIGURATION)

The “My Status” link provides an indication of the current status of the user as well as quick access to key services that are regularly modified. Unity will only display the options for the services that have been assigned to the user, available services are CommPilot Express (CPE), Do Not Disturb (DND), Call Forward Always (CFA), Remote Office and Hoteling Guest (for hot-desk environments).



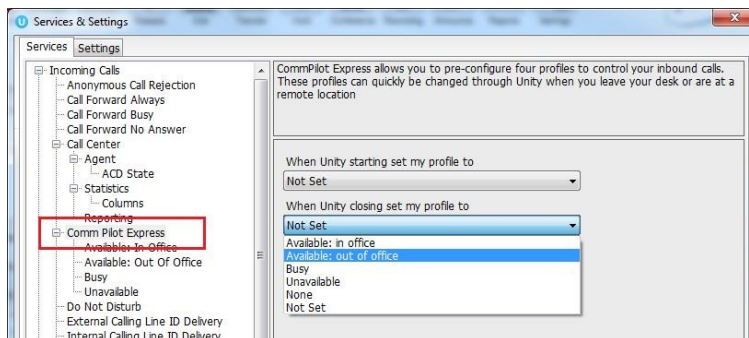


CommPilot profiles are also used to convey presence information to other users within the group or enterprise. As users change their CommPilot Express state, any Unity client that is monitoring that user [through the User Status list] will see their image change, as outlined below.

User State	Description	User Status Image
Available: In Office	I am in the office and available to receive calls.	✓
Available: Out Of Office	I am not in the office but am available to take calls	✓
Busy	I am currently busy (short term)	—
Unavailable	I am currently unavailable (longer term)	—
None	No call routing plan is in use	✓

### 13.1 Configuring CommPilot Express States

CommPilot Express allows the user to specify how inbound calls are to be handled. Once the four different profiles (above) have been configured in Settings, the profile in use can quickly be changed through the My Status link. Unity can also be configured to automatically apply a CommPilot Express profile when starting or closing, as below.



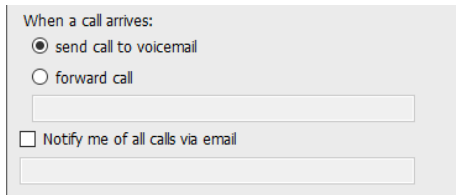
#### 13.1.1 Available: In Office

This is the profile to use when you are working from the desk where you phone is location, it should represent “normal” routing rules.



### 13.1.2 Available: Out Of Office

This is the profile to use when you are away from your desk for an extended period, but still available for receive calls. Examples are when in a meeting or when travelling.



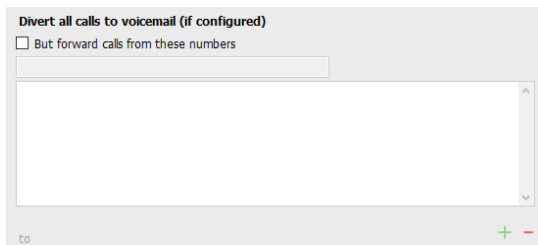
When a call arrives:

- ☒ send call to voicemail
- ☐ forward call

☐ Notify me of all calls via email

### 13.1.3 Busy

This is the profile to use when you are temporarily unavailable to take calls, for example when in a meeting where you don't want to be disturbed.



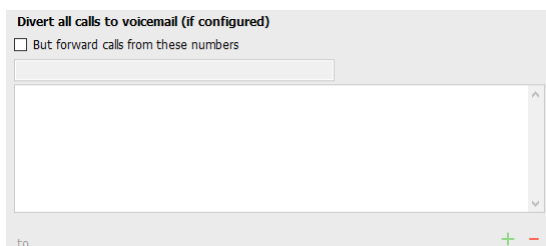
Divert all calls to voicemail (if configured)

☐ But forward calls from these numbers

to + -

### 13.1.4 Unavailable

Use this profile when you are away for an extended period of time and not available to take calls, for example when on vacation.



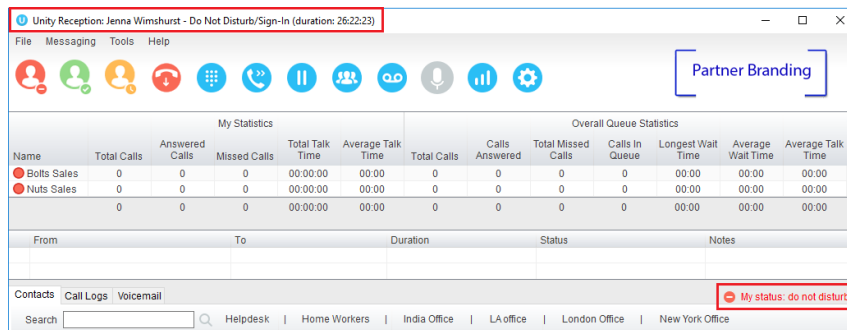
Divert all calls to voicemail (if configured)

☐ But forward calls from these numbers



to + -

## 13.2 Do Not Disturb

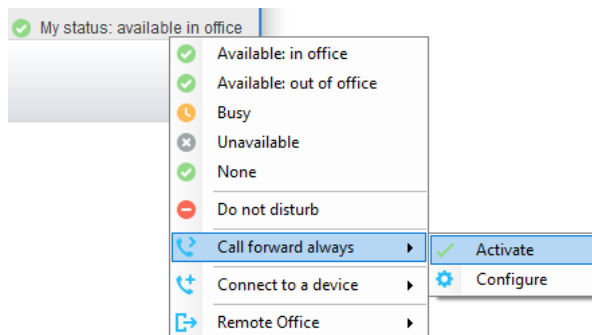
To activate Do Not Disturb, click on the My Status link and click the menu option. The My Status link will change to indicate the service activation, as will the Unity title bar.



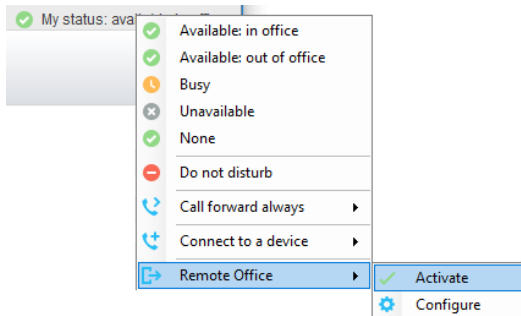
Anyone monitoring the user [in the Contacts list] will also see that they currently have Do Not Disturb activated.

 Steve Tutt	02082881251	Unavailable - Lunch	<b>Do not disturb</b>
 Steve Wardle	02082881245	Unavailable - Technical Supp...	Talking to Chris Tutt - 01:56

### 13.3 Call Forward Always



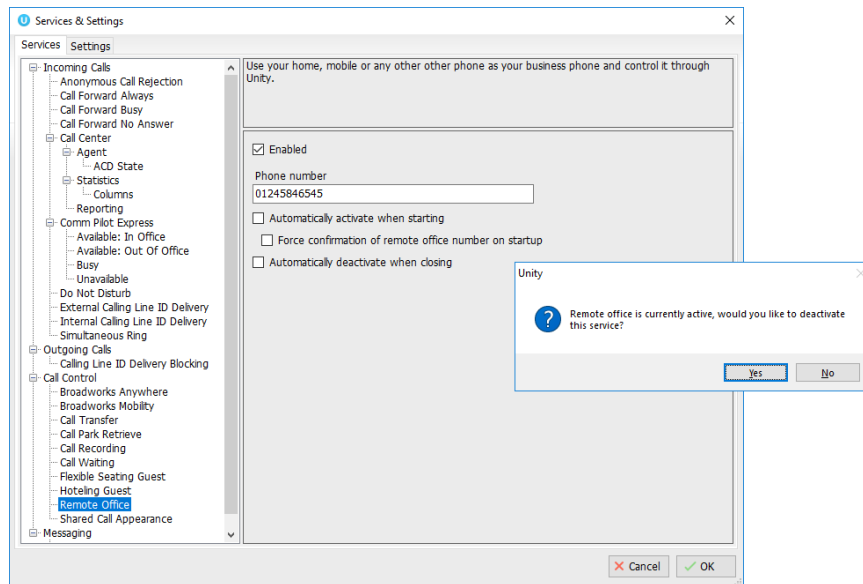
Use the My Status link to quickly activate/deactivate the service, or click configure to go directly to that service in Settings.



### 13.4 Remote Office

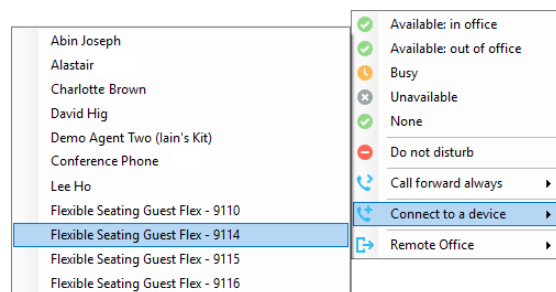
Use the My Status link to quickly activate/deactivate the service, or click configure to go directly to that service in Settings.

Unity can also be configured to automatically activate and deactivate Remote Office on startup and shutdown. If Unity is not configured to automatically deactivate when closing a prompt will be presented to the user, as shown below.

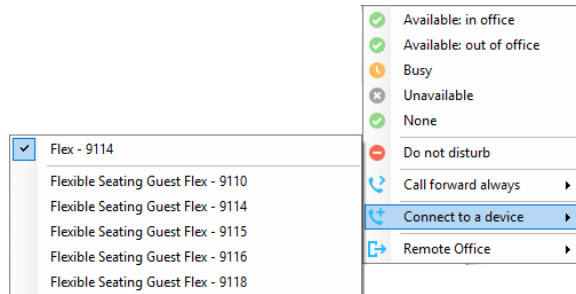


### 13.5 Hot-Desk and Flexible seating

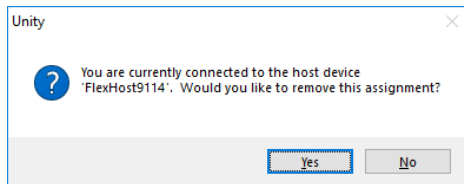
Hoteling Guest allows the user to connect to a device, typically in a hot-desk and flexible seating environment. To attach the user account to a device, select the device from the menu option below. Please note that only available devices [that aren't already in use] will be displayed.



There is no visual notification that the user account is attached to a device, other than if the user clicks in the My Status link, in which case they will see the device is ticked.



When Unity is closing, it will prompt the user to remove the device attachment.



If the user clicks no they will continue to be attached to the device until the association is automatically ceased by the Broadsoft.

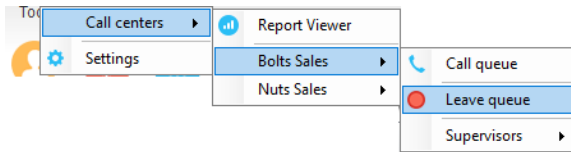
## 14 RECEPTION CALL CENTRE AGENT

Unity Reception includes all the call center features of Unity Agent, because a receptionist may be part of a call center in a busy front desk environment. If a call center agent service assigned to the receptionist, then Unity will automatically display ACD state buttons and allow the user to join or leave specific call centers [if permitted in the VoIP platform].

Unity Reception: Jenna Wimshurst - Available (duration: 00:03)													
File Messaging Tools Help													
Partner Branding													
My Statistics							Overall Queue Statistics						
Name	Total Calls	Answered Calls	Missed Calls	Total Talk Time	Average Talk Time		Total Calls	Calls Answered	Total Missed Calls	Calls In Queue	Longest Wait Time	Average Wait Time	Average Talk Time
Boils Sales	0	0	0	00:00:00	00:00		0	0	0	0	00:00	00:00	00:00
Nuts Sales	0	0	0	00:00:00	00:00		0	0	0	0	00:00	00:00	00:00
	0	0	0	00:00:00	00:00		0	0	0	0	00:00	00:00	00:00

### 14.1 Joining & Leaving Queues

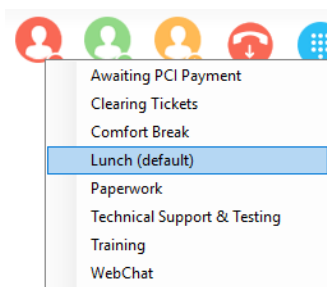
To join or leave a call center queue, the user can right-click on that queue in the Personal Wallboard [if displayed] or use the Tools menu, as shown below.




The Tools menu will display all call centers that the user belongs to, even if not displayed in the Personal Wallboard.

## 14.2 Changing ACD State

The ACD State buttons allow the user to change their current ACD state, including setting the unavailable reason code, as shown here. The title bar will show the current ACD state.



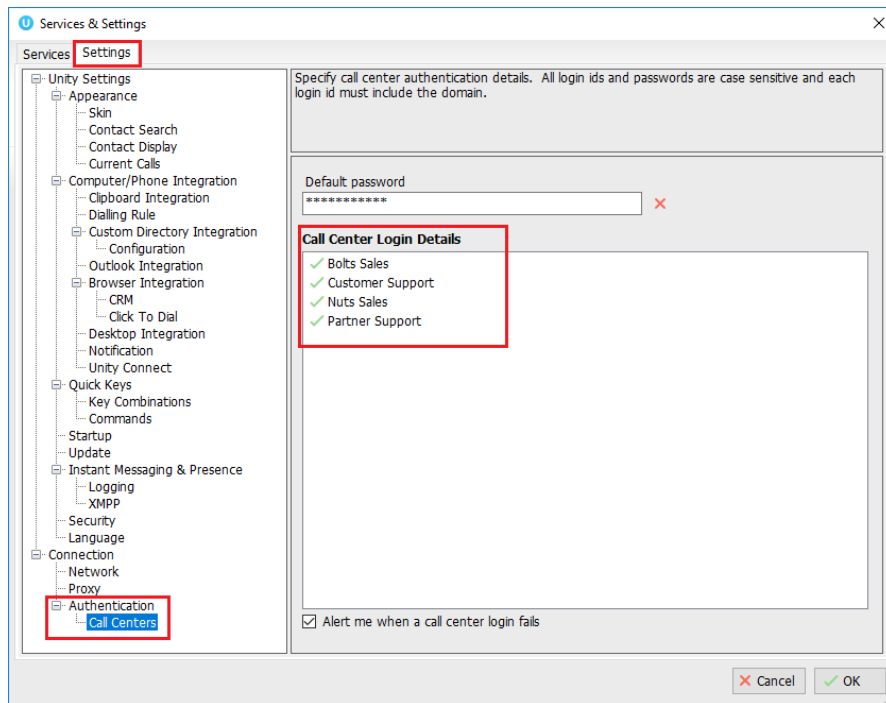
## 14.3 Personal Wallboard

The Personal Wallboard gives the call center agent a view of personal and overall queue performance by displaying key metrics. Statistics are broken down by “My Statistics” which shows the agent’s individual performance and “Overall Queue Statistics” which will show the current conditions across the entire call centre[s]. Some statistics are real-time while others are periodically polled from the VoIP platform. The Personal Wallboard can show a detailed view [one row per call center] or a summary view only, this is toggled using the  button in the upper right corner.

### 14.3.1 Authentication & Configuration

In order to display the Personal Wallboard Unity must log into the VoIP platform as each call center, as well as the agent. In order to display real-time statistics the call center must have the Client Call Control service assigned in the VoIP platform, if this is not the case the call center will still be displayed in the Personal Wallboard but all statistics will be periodically polled. Section 14.3.3 confirms which statistics are available in real-time.

Call center authentication is performed through Settings, as shown below.



If all call centers share the same password then it should be entered as the default password in Unity, which will then use it when logging into the VoIP platform as each call center that the agent is a member of. Otherwise double-click on each call center in the list to enter the password, the call center ID will not be editable. If a default password has been entered, then this cannot be overridden for a call center.

When setting the password for a specific queue, the same password can be used when logging into any other queues that don't currently have a password set, as shown here. The difference between this setting and the default password is that this setting only applies at the call center level, meaning any new call centers that the agent becomes a member of will not take this password by default, whereas they will take the default password. Also, if some call centers have a different password then they can set first, then this used to apply the same password to any other queues.

Call Center Login Details

Service ID

boltssales

Password

Login status

The password has not been entered.

☐ Apply to all queues without a password

The login status field will always show the current authentication state for that call center, options are:

**The call center logged in successfully:**

Unity has successfully logged in as the call center and the Client Call Control Service is assigned, meaning real-time statistics are available.

**The Client Call Control service is not assigned to this queue meaning the 'calls in queue' statistic is not available in real-time:**

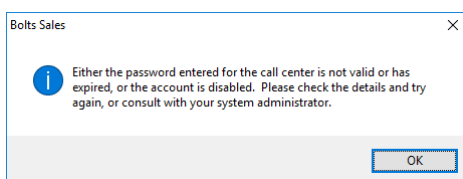
Unity was able to log into the VoIP platform as the call center so statistics will be displayed in the Personal Wallboard. However, because the Client Call Control service hasn't been assigned to the call center, all statistics will be polled.

**The password has not been entered:**

A default password has not been specified and there is no password entered for this specific call center.

**The call center login attempt failed. Please check the authentication details are correct and ensure the account is not disabled:**

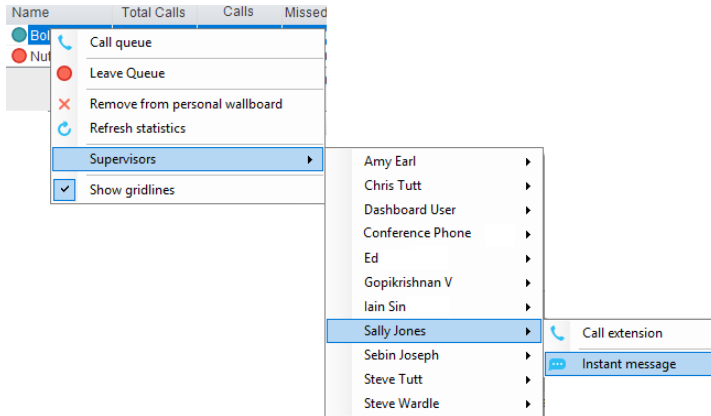
Unity was not able to login as the call center, most likely because the password is incorrect or the account has been disabled through too many failed login attempts. Unity may also display a message to the user when the login fails, as below. This depends on the "Alert me when a call center login fails" setting being active.



### 14.3.2 Overview

The Personal Wallboard is used not only to show agent and queue statistics for call centers, but also to quickly perform other actions on behalf of the agent.

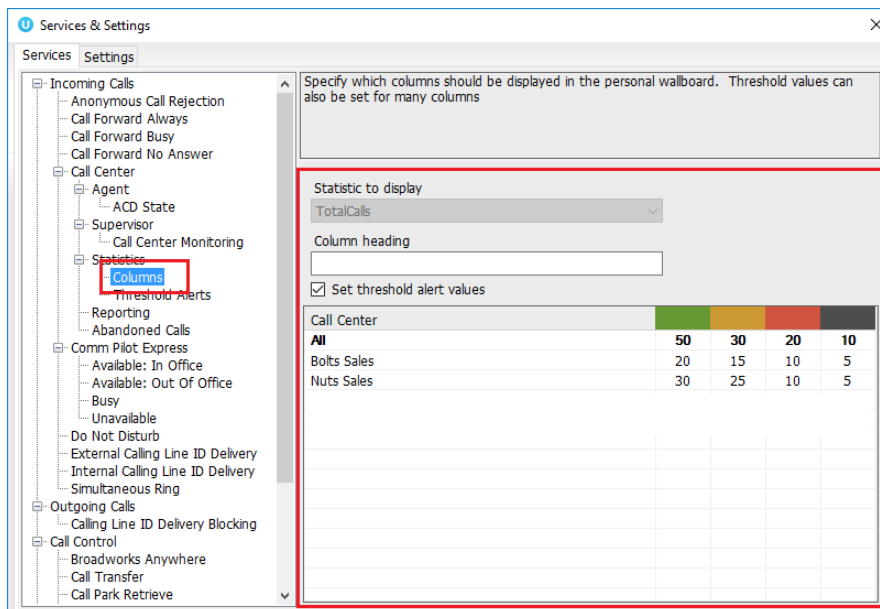




By right-clicking the call center, the agent can join or leave the call center [this toggles depending on whether the agent is currently joined or not], can call the queue [or transfer if there is a call in progress], or instant message or call a supervisor of the call center, as shown above.

### 14.3.3 Columns

There are 6 agent level and 22 call center level statistics available to be displayed in the Personal Wallboard, which will automatically resize to include all columns in the window width available. Columns can be added removed and reordered through Settings, as shown below.



The left panel shows the columns that are currently displayed both for the agent and call center and the order. Use the arrow buttons to reorder columns in the personal wallboard, the plus and

minus buttons to add or remove columns, or simply double-click a column to view its configuration.

Many columns support thresholds which employ a “traffic light” scheme to quickly indicate important call center metrics, such as the number of missed calls or the longest wait time for queued calls.

Please note that all statistics shown in Personal Wallboard reset every 24 hours at midnight.

#### 14.4 Receiving Call Center Calls

Agents will only receive calls routed through the call center if they are currently joined to that call center and the ACD state is set to Available. When receiving a call center call, Unity will display the “To” field as the name of the queue rather than the name of the agent, to indicate that this is a call center call. If a DNIS name is present this will also be shown [in brackets].

From	To	Duration	Status	Notes
Barry Simpson	Nuts Sales (Nuts International)	00:00	Ringing	Previously transferred to Andrew Smith

Call center calls are managed in exactly the same way as non-call center calls, as outlined in section 5.

#### 14.5 Assigning Disposition Codes

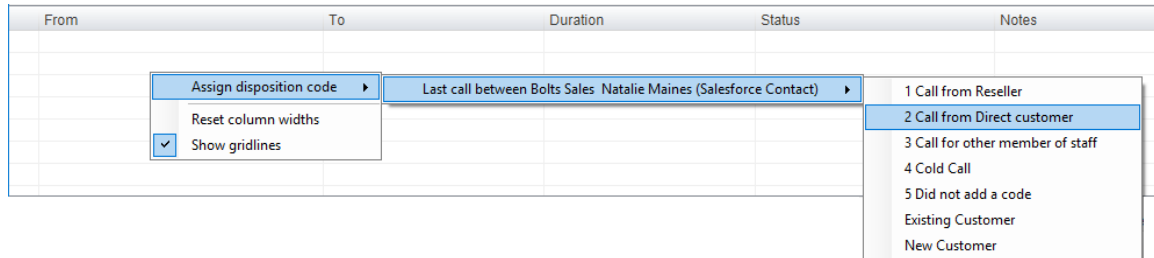
Although unlikely in a reception environment, a call center call can be flagged with one or more disposition codes, which is recorded by the VoIP platform to give more information about this call, for example was it the result of a marketing campaign, is it a complaint etc.

From	To	Duration	Status	Notes
Natalie Maines (Salesforce Contact)	Bolts Sales	00:18	Active - Not recording	

- Assign call to account code
- Add number to personal directory
- Add call note
- Show CRM contact
- Add CRM call log entry
- Escalate to first supervisor
- Instant conference/emergency escalate to first supervisor
- Supervisors
- Assign disposition code
  - 1 Call from Reseller
  - 2 Call from Direct customer
  - 3 Call for other member of staff
  - 4 Cold Call
  - 5 Did not add a code
  - Existing Customer
  - New Customer
- Reset column widths
- Show gridlines

Assign a disposition code to a call by right-clicking and selecting the menu option above, a single disposition code can only be assigned once to a call, but multiple codes can be assigned to the same call.

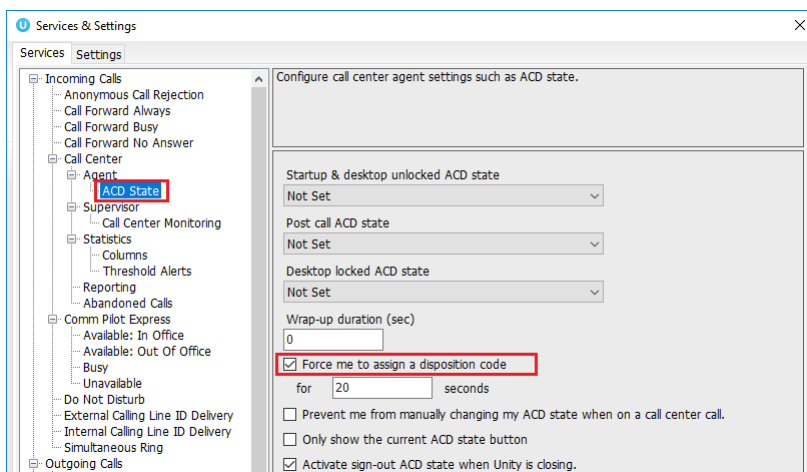
A disposition code can also be assigned to the last received call center call, as shown below. Right-click in the Active Call Window to assign the disposition code, please note that Unity indicates that “Sales Call” has already been assigned to this call.

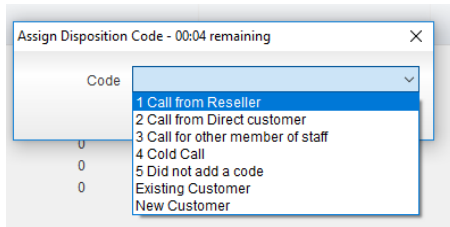


The agent must be in Wrap-Up ACD state in order to assign a disposition code to the previous call center call. If this isn't the case Unity will prompt the user to change the ACD state the Wrap-Up, assign the disposition code, then change the ACD back to the current state.

When Unity is configured to force the agent to assign a disposition code through a popup window which is automatically displayed to the user when the call is released.

The Unity UI will be disabled and the popup window will appear over all applications on the user's desktop. A timer can be specified which will display a count-down to the user, and will automatically close once the timer duration has elapsed. When they click Available they get a drop list of Disposition Codes. They must choose one for the previous call before they can become Available. This feature is activated in Settings as below.





## 14.6 Supervisor Escalation

Part of the call center agent functionality included in Unity Reception is the ability to escalate a call center call to a specific supervisor, or to the first supervisor available.

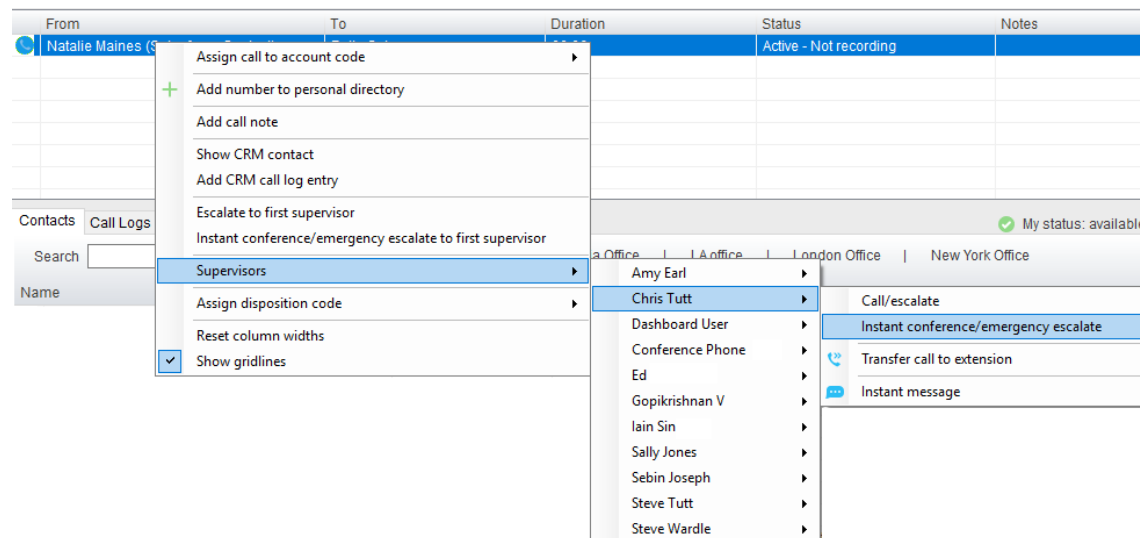
There are two kinds of escalation available, both of which are recorded as an escalation in the VoIP platform.

### 14.6.1 Standard Escalation

This will put the call on hold and dial the supervisor. Once the supervisor answers the agent can perform an announced transfer, a three-way conference or simply toggle between calls.

### 14.6.2 Emergency Escalation

Unity will dial the supervisor and when then call is answered, will start an instant conference with that supervisor and the remote caller.

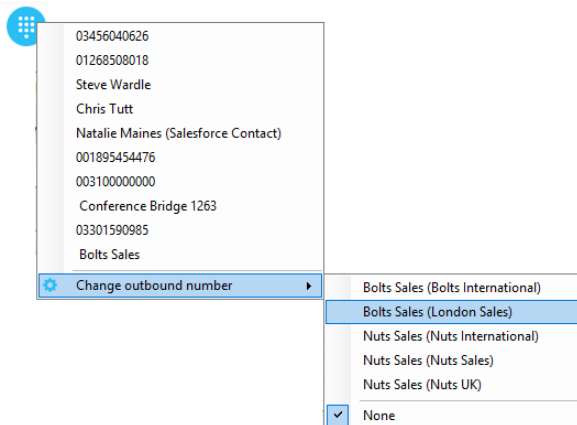


Escalate a call by right-clicking in the Active Call Window and selecting the escalation option as shown above. When performing a call escalation, the agent can select a specific supervisor to escalate to, or the first available supervisor which is decided by the VoIP platform. The agent can


also blind transfer the call to the supervisor without performing an escalation or send an instant message if the supervisor.

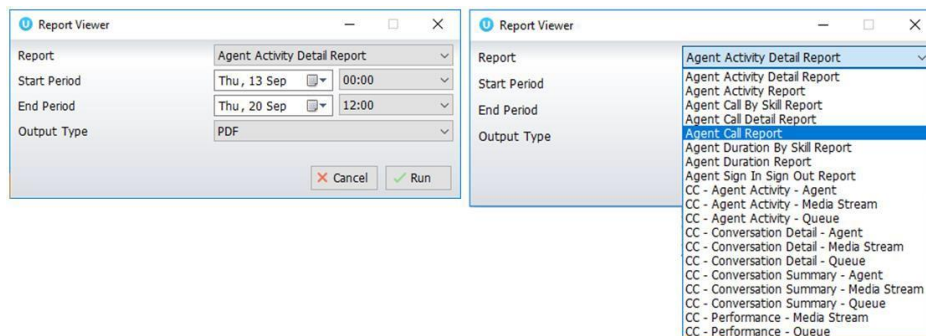
## 14.7 Activating Outbound DNIS

If the receptionist is an agent of one or more call centers that support outbound DNIS, then the user can select an outbound DNIS which will determine which outbound caller ID/name is presented to the remote party when the user makes external outbound calls. To change the outbound DNIS right click the Dial button and select the menu option to change the outbound number, as below. All numbers configured as outbound DNIS will be presented, and the currently select number will be ticked. Please note that if an outbound number is selected here, it will be used when making all calls until Unity is closed or the “None” menu option is selected.



## 16.8 Report Viewer

Unity offers standard call center agent reporting to the receptionist, which is accessed through the Report Viewer  button or by clicking Tools > Call Centers > Report Viewer.



The below reports are available to be generated by the agent:

- Agent Activity Detail Report
- Agent Activity Report
- Agent Call by Skill report
- Agent Call Detail Report
- Agent Call Report
- Agent Duration by Skill Report
- Agent Duration Report
- Agent Sign-In/Sign-Out Report

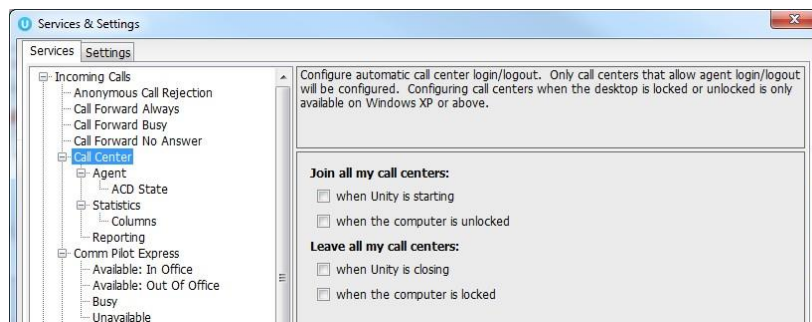
As additional reports are made available in the VoIP platform they will be displayed in the report viewer. Please consult your telephony service provider for an overview of the call center reports, including input parameters.

## 14.9 Call Center Agent Configuration

Outside of call center authentication, there are many settings available within Unity to automate actions or configure the call center agent environment.

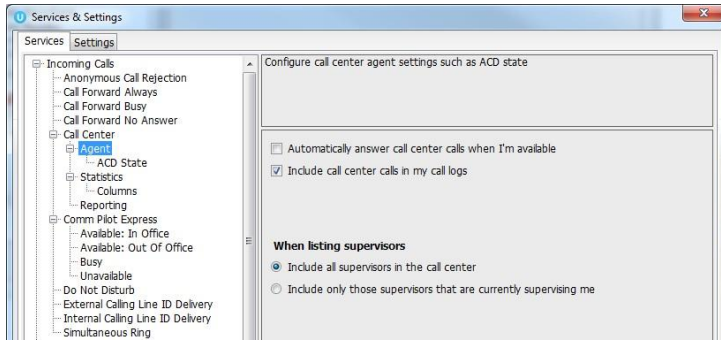
### 14.9.1 Call Center

Unity can be configured to automatically join the agent to all call centers that they are a member of [regardless of whether that call center is displaying in the Personal Wallboard] when Unity is starting up or is unlocked. The agent can also be set to leave all call centers when closing Unity or locking the desktop.

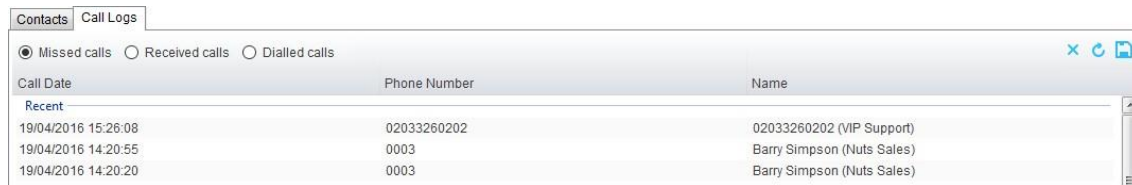


### 14.9.2 Agent

Unity may be required to automatically answer inbound call center calls if the agent is available and not currently on a call, which removes the ability for them to reject/bounce the call.



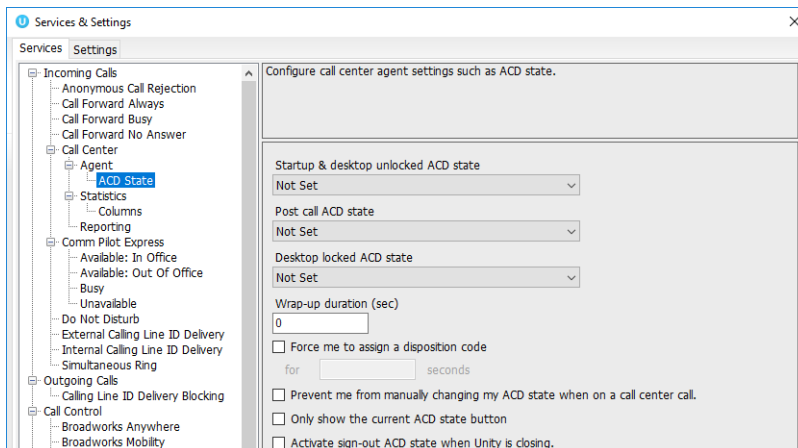
Call center calls may need to be included in the Call Logs list, as shown below. If the call log entry is for a call center then the queue name will be shown in the Name field, however this is not stored in the VoIP platform so if the logs are refreshed or Unity is restarted this information will be lost.



When listing supervisors in the menus, Unity can show all supervisors in the call center or only those that are currently monitoring the agent.

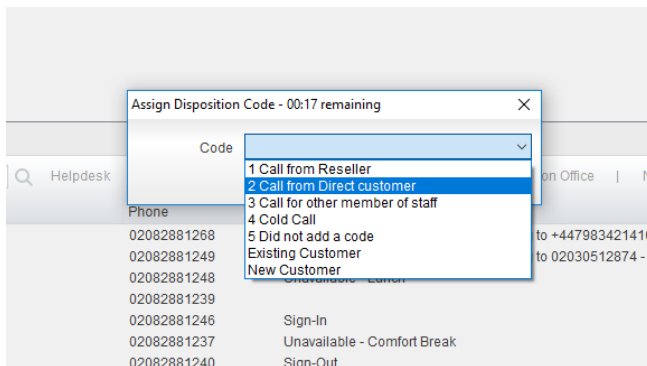
### 14.9.3 ACD State

Unity can be configured to automatically change the ACD state of the agent based on specific events occurring, such as the desktop being locked or unlocked or a call center call ending.



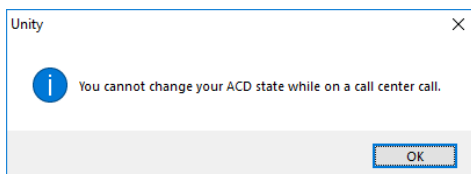
Wrap Up Duration: This will automatically change the ACD state to Available after the specified duration [in seconds] has passed. Please note this does not work with the same setting in the VoIP platform, so should only be set here if not set there.

Force me to assign a disposition code: If this setting is active then when a call ends for a call center that offers disposition codes, the ACD state will be automatically changed to Wrap-Up and the agent won't be able to change it back to Available without assigning a disposition code to the last call, as shown below.



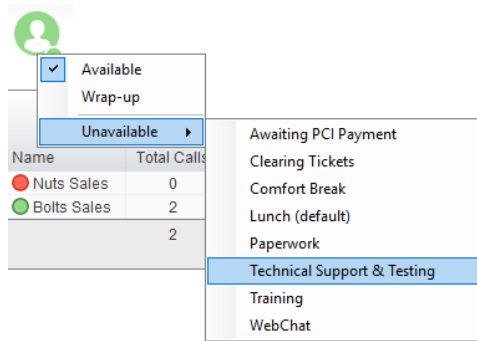
When the agent selects a disposition code it will be recorded on the VoIP platform and Unity will change the ACD state to Available.

Prevent me from manually changing my ACD state when on a call center call: When activated, Unity will show the below message if the user attempts to change the ACD state when on a call center call, because this may impact agent performance statistics.



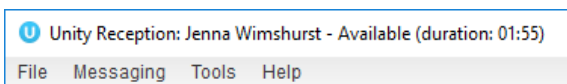
Only show the current ACD state button: Unity can show the three main ACD state buttons which is the default option, or only the current ACD state, in which case the agent changes the state using the context menu, as shown below.





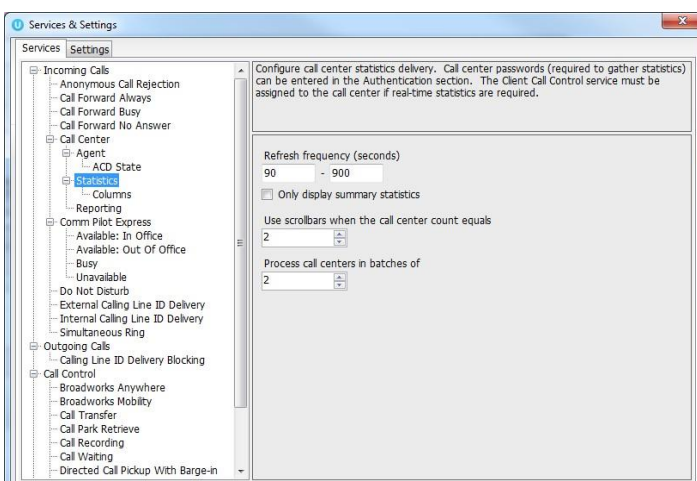
Activate sign-out ACD state when Unity is closing: If this setting is not active then Unity will not change the ACD state when closing, which may impact agent performance statistics.

Displaying ACD state: When showing the ACD state in the title bar, Unity can show the start time or the duration, as shown below.



#### 14.9.4 Statistics

Those call center statistics that aren't displayed in real-time are periodically polled from the VoIP platform, the polling frequency can be set in Settings but must adhere to minimum values set by the telephony service provider. The minimum and maximum values in a range must be entered, from which Unity will randomly generate a number to use as the polling interval, this will be different per call center to reduce any potential resource usage spikes when gathering statistics.



Only display summary statistics: If active the Personal Wallboard will only be shown in summary view, the agent will not be able to expand the list to include the call center detail.

Use scrollbars: When displaying a large number of call centers in the Personal Wallboard, scrollbars must be used to ensure the Personal Wallboard doesn't take all the space in the screen. This will ensure scrollbars are employed, the maximum value is 20.

Process call centers: This setting is used to batch call centers together when loading information during startup. It should not be changed unless there is a delay when loading the Personal Wallboard during startup, and only by those that understand the implications of changing this value.

### 14.9.5 Reporting

Unity can be configured to generate reports with specific date/time formats, as illustrated below. These settings are used when the Report Viewer is generating call center reports.

